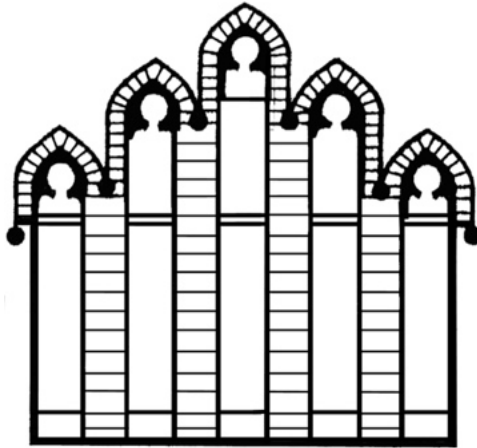


# TUESDAY OF HOLY WEEK HOLDEN EVENING PRAYER

MARCH 26, 2024  
7:00PM



ST. LUKE'S EPISCOPAL CHURCH  
73 S. FULLERTON AVENUE, MONTCLAIR, NJ  
SLECHURCH.ORG 973-744-6220

*"Joyfully seeking and serving Christ"*

# SERVICE OF LIGHT

*Leader or Assistant*

Jesus Christ, you are the light of the world,

*All*

the light no darkness can o - ver - come.

*Leader or Assistant*

Stay with us now, for it is evening,

*All* *Leader or Assistant*

and the day is al - most over. Let your light scat - ter the darkness,

*All*

and shine within your peo - ple here.

## EVENING HYMN

*All*

1. Joy - ous light of heav'n - ly glo - ry, lov - ing  
 2. In the stars that grace the dark - ness, in the  
 3. You who made the heav - en's splen - dor, ev - 'ry

glow of God's own face, you who sing cre - a - tion's  
 blaz - ing sun of dawn, in the light of peace and  
 danc - ing star of night, make us shine with gen - tle

sto - ry, shine on ev - 'ry land and race. Now as  
 wis - dom, we can hear your qui - et song. Love that  
 jus - tice, let us each re - flect your light. Might - y

eve - ning falls a - round us, we shall raise our songs to  
fills the night with won - der, love that warms the wea - ry  
God of all cre - a - tion, gen - tle Christ who lights our  
you. God of day - break, God of shad - ows, come and  
soul, love that bursts all chains a - sun - der, set us  
way, lov - ing Spir - it of sal - va - tion, lead us  
light our hearts a - new.  
free and make us whole.  
on to end - less day.

## EVENING THANKSGIVING

*Leader or Assistant* *All*  
May God be with you all. And al - so with you.

*Leader or Assistant* *All*  
Let us sing our thanks to God. It is right to give God thanks and praise.

*Leader* Blessed are you, Creator of the universe, from old you have led your people by night and day. May the light of your Christ make our darkness bright, for your Word and your presence are the light of our pathways, and you are the light and life of all creation.

*All*  
A - men.

# PSALMODY, READINGS & CANTICLES

## PSALM 141

### Refrain

*All*

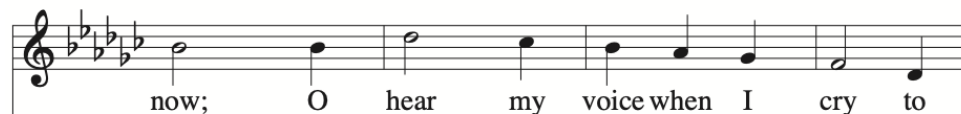


### Verse 1

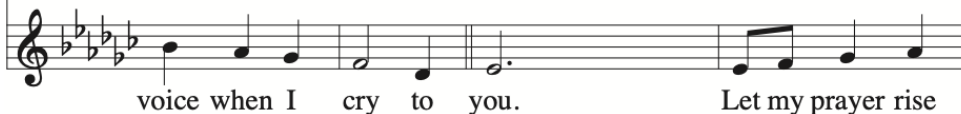
*Leader or Group One*



*All or Group Two*



### Refrain



in-cense be - fore you, the lift-ing up of my hands as an  
up like in-cense be - fore you, the lift-ing up of my

## Verse 2

of-fer-ing to you. 2. Keep watch with -  
hands as an of-fer-ing to you.

in me, God; deep in my heart may the light of your  
2. Keep watch with - in me, God; deep in my

love be burn - ing bright.  
heart may the light of your love be burn - ing

### Refrain

Let my prayer rise up like in-cense be - fore you, the  
bright. Let my prayer rise up like in-cense be -  
lifting up of my hands as an of-fer-ing to you.  
fore you, the lift-ing up of my hands as an of-fer-ing to

### Verse 3

3. All praise to the God of all, Cre - a - tor of  
you. 3. All praise to the  
life; all praise be to Christ and the Spir - it of  
God of all, Cre - a - tor of life; all praise be to

**Refrain**

love. Let my prayer rise up like  
 Christ and the Spir-it of love. Let my prayer rise  
 in-cense be - fore you, the lift-ing up of my hands as an  
 up like in-cense be - fore you, the lift-ing up of my  
 of - fer-ing to you.  
 hands as an of - fer-ing to you.

*Silence for meditation.*

*Leader* May our prayers come before you, O God, as incense,  
 and may your presence surround and fill us,  
 so that in union with all creation,  
 we might sing your praise and your love in our lives.

*All* **Amen.**

## **HOMILY** *Pastor Tristan Shin*

*Silence for meditation.*

*Leader* The light shines in the darkness ...

*All* ... **and the darkness has not overcome it.**

## THE ANNUNCIATION

A reading from the Gospel according to Luke (1:26-28,30-32,38)

*Leader* An angel went from God to a town called Nazareth to a woman whose name was Mary. The angel said to her, "Rejoice, O highly favored, for God is with you. You shall bear a child, and his name shall be Jesus, the Chosen One of God Most High." And Mary said, "I am the servant of my God. I live to do your will."

## THE MAGNIFICAT

*All*



1., 3. My soul pro-claims your great-ness, O God, and my  
2. You have cast the might - y down from their thrones, and up -

spir - it re-joic - es in you. You have looked with love on your  
lift - ed the hum-ble of heart. You have filled the hun - gry with

ser - vant here, and blessed me all my life through.  
won-drous things, and left the wealth-y no part.

Great and might - y are you, O Ho - ly One,  
Great and might - y are you, O Faith - ful One,

strong is your kind-ness ev - er-more. How you fa - vor the  
strong is your jus - tice, strong your love, as you prom-ised to

*D.C.*  
weak and low-ly one, hum - bling the proud of heart!  
Sar - ah and A - bra-ham, kind - ness for - ev - er - more.



# LITANY AND PRAYERS

*All*  
A *repeat continuously* B

Hmm. God of mer-cy, hold us in love.

A *Leader or Assistant* B

1. In peace, in peace, we pray to you:  
 2. For peace and sal - va - tion, we pray to you:  
 3. For peace be-tween na-tions, for peace be-tween peo - ples:  
 4. For us, who are gath-ered to wor-ship and praise you:  
 5. For all of your ser-vants who live out your gos - pel:  
 6. For all those who gov-ern, that jus-tice might guide them:  
 7. For all those who la - bor in ser-vice to oth - ers:  
 8. Grant weath-er that nour-ish - es all of cre - a - tion:  
 9. Keep watch on our loved ones and keep us from dan - ger:  
 10. For all the be - lov - ed who rest in your mer - cy:

A *Leader or Assistant*

Help us, com-fort us, all of our days:

*All*

Keep us, hold us, gra - cious God.

## CLOSING PRAYERS

*Leader* Great and merciful God,  
source and ground of all goodness and life,  
give to your people the peace that passes all understanding,  
and the will to live your gospel of mercy and justice,  
through Jesus Christ our Lord.

*All* **Amen.**

## THE LORD'S PRAYER *(Book of Common Prayer, p. 364)*

*Feel free to pray in whatever language and words that bring you closer to God.*

*Leader* God remember us in your love, and teach us to pray.

*All*

Our	<table border="0"><tr><td>Mother</td><td rowspan="3"> </td><td rowspan="3">who art in heaven,</td></tr><tr><td>Father</td></tr><tr><td>Creator</td></tr></table>	Mother		who art in heaven,	Father	Creator
Mother		who art in heaven,				
Father						
Creator						
	hallowed be thy Name, thy kingdom come, thy will be done, on earth as it is in heaven.					
	Give us this day our daily bread.					
	And forgive us our trespasses as we forgive those who trespass against us.					
	And lead us not into temptation, but deliver us from evil.					
	For thine is the kingdom, and the power, and the glory, for ever and ever. Amen.					

FINAL BLESSING

*Leader or Assistant* *All*



Let us bless our God: Praise and thanks to you.

May God, Cre - a - tor, bless us and keep us, may

Christ be ev - er light for our lives, may the Spir - it of Love be our

guide and path for all of our days. A - men.

THE PEACE *(Book of Common Prayer, p. 360)*

*Officiant* The peace of Christ be always with you.  
*People* And also with you.

# WELCOME TO ST. LUKE'S

*We are very glad that you are able to join us.*

*Please feel free to contact us through our website at [slechurch.org](http://slechurch.org).*

## **ST. LUKE'S VESTRY & LEADERS**

### Wardens

Godfrey Gregg  
Denise Price

### Class of 2024

Susan Andersen  
Stephanie Borsi  
Alison Curtin  
Patrick Rodriguez

### Class of 2025

Shahri Griffin  
Tim Mannion  
Okey Okuzu  
Martha Thalheimer

### Class of 2026

Rochelle Carter-Wilson  
Sean McDonald  
Kayode Oyegbite  
Stevie Tryson

### Clerk

Alison Curtin

### Treasurer

Patrick Rodriguez

### Sexton

Bayron Gonzales Jiménez

*You can reach staff and leaders at  
[lastname@slechurch.org](mailto:lastname@slechurch.org)*

## **ST. LUKE'S CLERGY**

Rector: The Rev. John A. Mennell  
[mennell@slechurch.org](mailto:mennell@slechurch.org)  
[mennell.appointlet.com](http://mennell.appointlet.com)

Associate Rector: Pastor Tristan Shin  
[shin@slechurch.org](mailto:shin@slechurch.org)

Assisting Clergy: The Rev. Tom Laws  
[laws@slechurch.org](mailto:laws@slechurch.org)

## **ST. LUKE'S STAFF**

Parish Administrator: Christine Corso  
[corso@slechurch.org](mailto:corso@slechurch.org)

Business Operations Manager: Pam Smith  
[smith@slechurch.org](mailto:smith@slechurch.org)

Director of Family Ministries: Kathy DeWalt  
[dewalt@slechurch.org](mailto:dewalt@slechurch.org)

Director of Music: Ronald Baltimore  
[baltimore@slechurch.org](mailto:baltimore@slechurch.org)

Junior Choir Director: Kelly Wenz  
[juniorchoir@slechurch.org](mailto:juniorchoir@slechurch.org)

Bookkeeper: Marty Chavkin  
[bookkeeper@slechurch.org](mailto:bookkeeper@slechurch.org)

## **TONI'S KITCHEN**

Executive Director: Anne Mernin  
[mernin@toniskitchen.org](mailto:mernin@toniskitchen.org)

Administrative Support: Jennifer Pine  
[hello@toniskitchen.org](mailto:hello@toniskitchen.org)