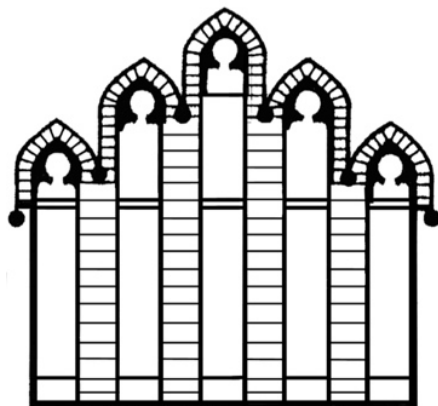


# ANNUAL REPORT

MAY 19, 2013



ST. LUKE'S EPISCOPAL CHURCH,  
MONTCLAIR, NJ  
[WWW.SLECHURCH.ORG](http://WWW.SLECHURCH.ORG)

*"Joyfully seeking and serving Christ"*

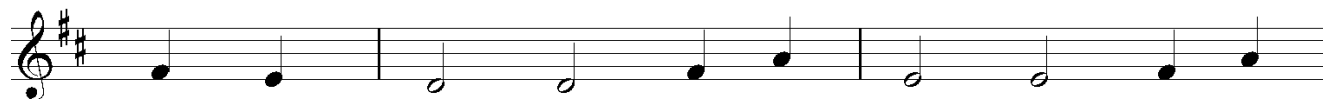


# AGENDA FOR ST. LUKE'S PARISH MEETING, MAY 19, 2013

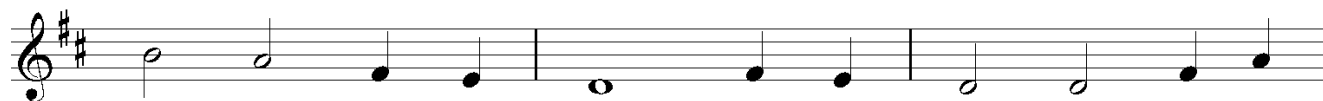
Agenda Items	Time (Minutes)
Hymn 686 Come Thou Fount ( <i>Nettleton</i> ) .....	3
Call to Order and Quorum Confirmation .....	1
Opening Prayer .....	2
Appointment of Secretary .....	1
Regulations for Voting at Parish Meeting .....	3
2.6 QUALIFICATIONS OF VOTERS: The persons entitled to vote at any Parish meeting shall be:	
a) Baptized;	
b) At least 16 years of age;	
c) Of good moral character;	
d) Adherents of the Protestant Episcopal Church;	
e) Regular attendance at the services of the Parish, for six (6) calendar months before the meeting; and	
f) Regular contributors to the current expenses of the parish for the last six (6) months. The records maintained by the Treasurer shall be sufficient evidence of contribution. [D. N. Can 9.5] Contributions may be made individually or as a family unit.	
2.10 VOTING: Elections shall be by ballot, and the polls shall remain open for one half hour, and for such longer time as may be required to receive the ballot of the persons present. Proxy and Absentee ballots will not be allowed. Elections shall be by plurality of the votes cast.	
Introduction of Vestry .....	3
Introduction of Nominees .....	3
Distribution of Ballot .....	3
Operations Committee Reports	
<u>Committee</u>	<u>Speaker</u>
Finance Report	Penny Vance .....
Youth Ministry	Kathy DeWalt .....
Outreach	Catherine Murray/Anne Mernin .....
Spiritual Enrichment	Walter Booker .....
Special Events	Mo Balsamo .....
Music Program	Charles Hunter .....
Planned Giving	Harry Mayo .....
Buildings and Grounds	Suzanne Poor/Will Hobbie .....
Capitol Campaign	Tom Cochran .....
Stewardship	Penny Vance .....
Rector's Wrap Up .....	5
Recognition and Commissioning of Newly Elected Vestry Members .....	3
Appreciation of Retiring Members .....	5
Closing Prayer .....	2
Hymn 690 Guide me, O though great Jehovah .....	3
Adjournment	

# HYMN 686

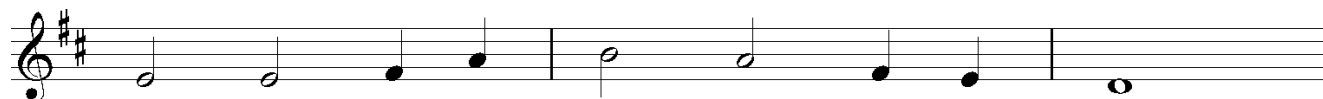
Come Thou Fount



1 Come, thou fount of ev - ery bless - ing, tune my  
2 Here I find my great - est trea - sure; hith - er,  
3 Oh, to grace how great a debt - or dai - ly



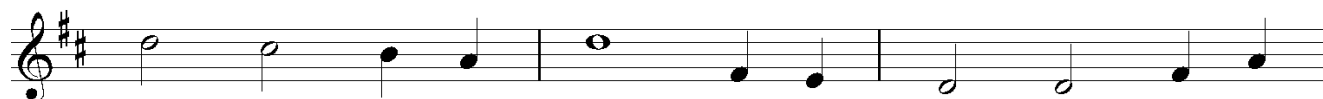
heart to sing thy grace! Streams of mer - cy nev - er  
by thy help, I've come; and I hope, by thy good  
I'm con - strained to be! Let thy good - ness, like a



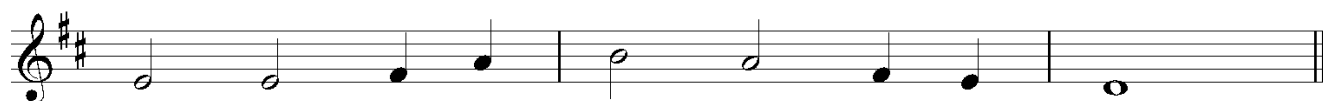
ceas - ing, call for songs of loud - est praise.  
plea - sure, safe - ly to ar - rive at home.  
fet - ter, bind my wan - dering heart to thee:



Teach me some me - lo - dious son - net, sung by  
Je - sus sought me when a stran - ger wan - dering  
prone to wan - der, Lord, I feel it, prone to

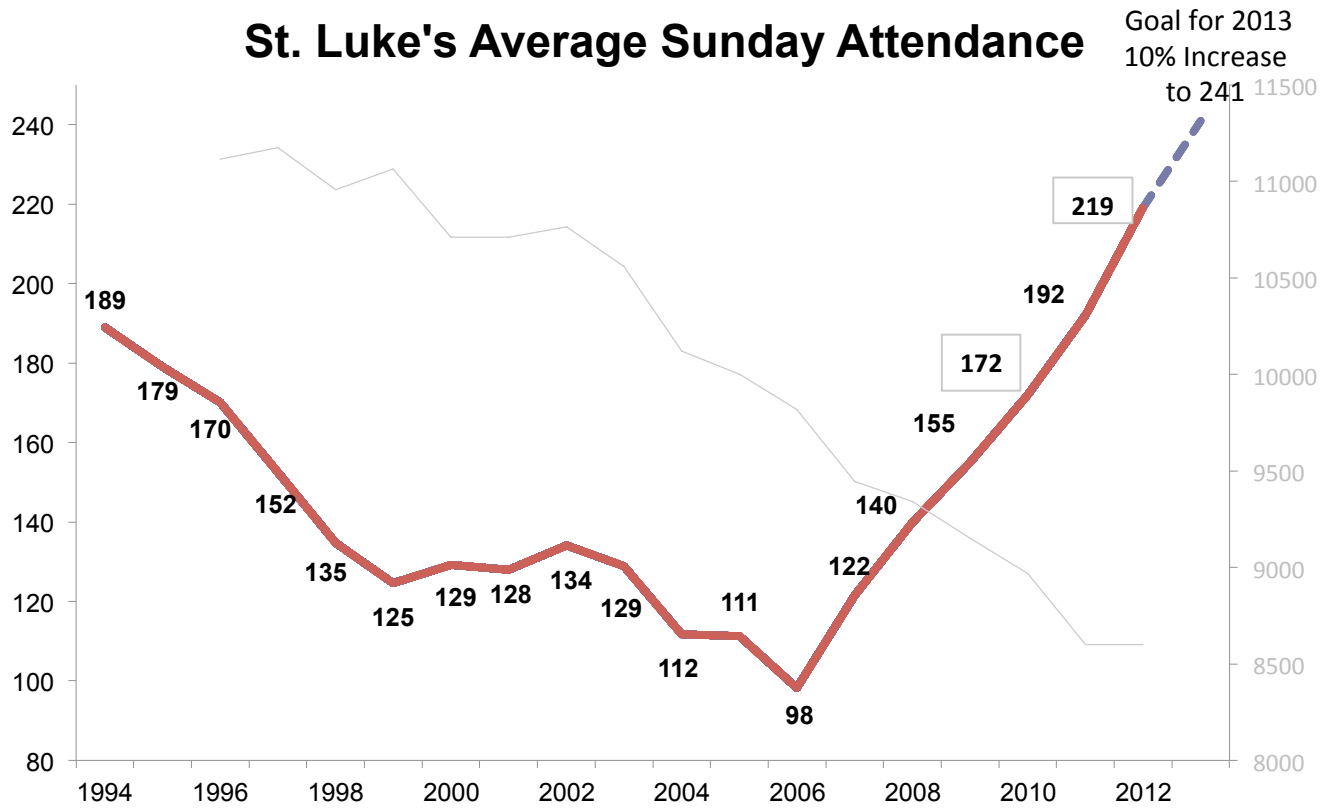


flam - ing tongues a - bove. Praise the mount! Oh, fix me  
from the fold of God; he, to res - cue me from  
leave the God I love; here's my heart, oh, take and

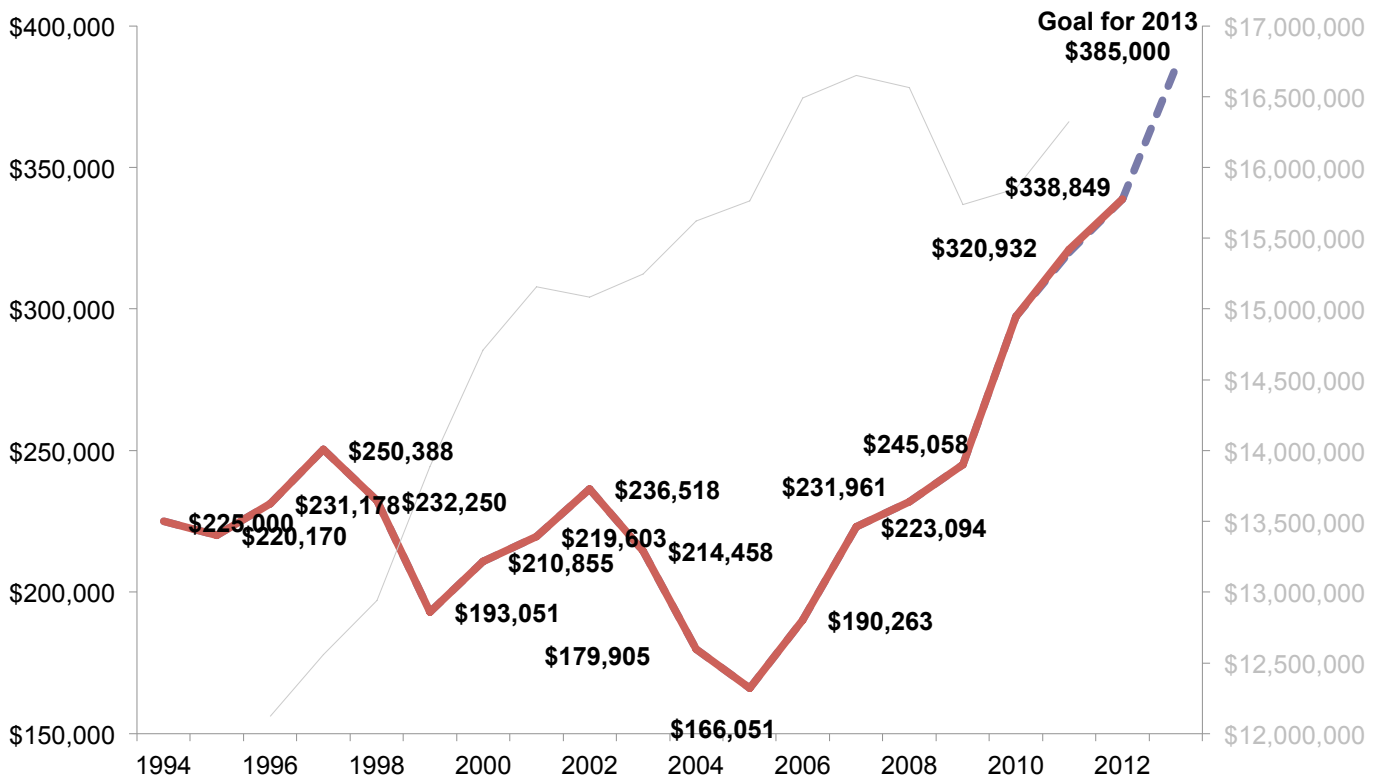


on it, mount of God's un - chang - ing love.  
dan - ger, in - ter - posed his pre - cious blood.  
seal it, seal it for thy courts a - bove.

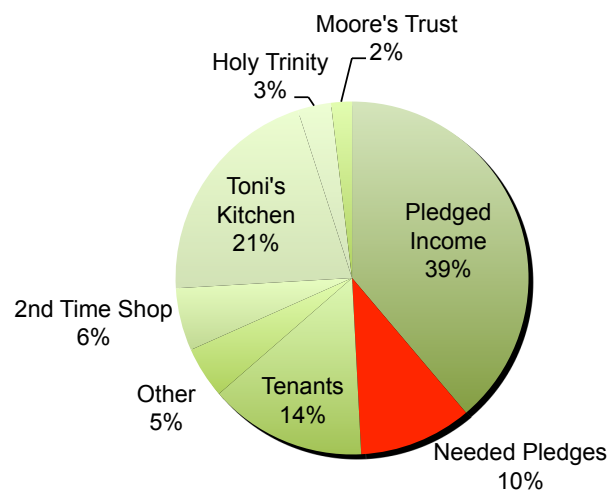
## St. Luke's Average Sunday Attendance



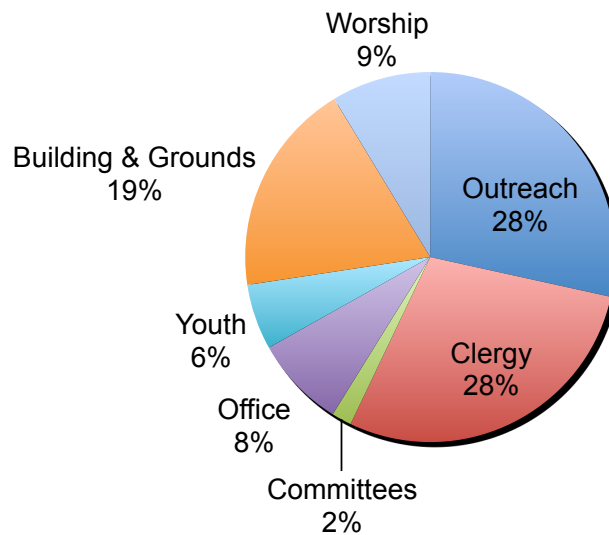
## St. Luke's Plate and Pledge



## 2013 Expected Operating Income \$786,500



## 2013 Expected Operating Expense \$785,143



## St. Luke's Episcopal Church 2013 Budget to Actual

		2013 Budget	Jan-13 Actual	Feb-13 Actual	Mar-13 Actual	Apr-13 Actual	May-13 Actual	YTD Actual	Budget Target	Variance
1	<b>Income</b>									
2	Unrestricted Income:									
3	Plate	\$10,000	\$386	\$1,084	\$1,818	\$1,034	\$0	\$4,322	\$3,333	\$989
4	Pledge	\$375,000	\$22,374	\$26,692	\$43,822	\$24,282	\$0	\$117,170	\$125,000	(\$7,831)
5	Special Events	\$26,000	\$0	\$0	\$0	\$0	\$0	\$0	\$8,667	(\$8,667)
6	Other Unrest. Inc	\$0	\$0	\$1,000	\$160	\$500	\$0	\$1,660	\$0	\$1,660
7	Sub-Total:	\$411,000	\$22,760	\$28,776	\$45,800	\$25,815	\$0	\$123,152	\$137,000	(\$13,848)
8	Restricted Op. Income:									
9	Flower/Altar/Etc.	\$22,500	\$327	\$710	\$2,025	\$525	\$0	\$3,587	\$7,500	(\$3,913)
10	Moore Trust Inc.	\$15,000	\$0	\$0	\$3,000	\$0	\$0	\$3,000	\$5,000	(\$2,000)
11	ECW	\$25,000	\$0	\$0	\$9,000	\$0	\$0	\$9,000	\$8,333	\$667
12	Holy Trinity WO	\$24,000	\$0	\$0	\$0	\$44	\$0	\$44	\$8,000	(\$7,956)
13	Diocesan Support	\$10,000	\$0	\$0	\$0	\$10,000	\$0	\$10,000	\$3,333	\$6,667
14	Sub-Total:	\$96,500	\$327	\$710	\$14,025	\$10,569	\$0	\$25,632	\$32,167	(\$6,535)
15	Reimbursement Income:									
16	Rents	\$95,595	\$5,847	\$10,087	\$5,157	\$9,787	\$0	\$30,877	\$31,865	(\$988)
17	Misc. Usage Fees	\$17,405	\$0	\$500	\$150	\$0	\$0	\$650	\$5,802	(\$5,152)
18	Sub-Total:	\$113,000	\$5,847	\$10,587	\$5,307	\$9,787	\$0	\$31,527	\$37,667	(\$6,139)
19	Restricted Op. Income Total:	\$620,500	\$28,934	\$40,073	\$65,132	\$46,171	\$0	\$180,311	\$206,833	(\$26,523)
20	Restricted Use Income:									
21	Toni's Kitchen	\$140,000	\$65,360	\$11,238	\$33,063	\$28,832	\$0	\$138,492	\$46,667	\$91,826
22	2nd Time Around	\$20,000	\$3,412	\$2,925	\$3,786	\$4,929	\$0	\$15,052	\$6,667	\$8,385
23	All Other	\$6,000	\$358	\$146	\$390	\$122	\$0	\$1,016	\$2,000	(\$984)
24	Restricted Use Income Total	\$166,000	\$69,129	\$14,309	\$37,239	\$33,883	\$0	\$154,560	\$55,333	\$99,227
25	Non-Recurring Revenue:									
26	Bequests/Grants	\$0	\$0	\$0	\$0	\$73,388	\$0	\$73,388	\$0	\$0
27	<b>Total 2013 Income</b>	<b>\$786,500</b>	<b>\$98,064</b>	<b>\$54,382</b>	<b>\$102,371</b>	<b>\$153,442</b>	<b>\$0</b>	<b>\$408,259</b>	<b>\$262,167</b>	<b>\$72,704</b>
28	<b>Expense</b>									
29	Clergy Expense:									
30	Mennell/Wilcox/SLEC Supply	\$219,800	\$26,189	\$12,159	\$13,485	\$20,887	\$0	\$72,720	\$73,267	\$546
31	Holy Trinity WO Supply	\$5,000	\$0	\$0	\$800	\$0	\$0	\$800	\$1,667	\$867
32	Sub-Total:	\$224,800	\$26,189	\$12,159	\$14,285	\$20,887	\$0	\$73,520	\$74,933	\$1,413
33	Office Expense:									
34	Communications Director	\$25,000	\$0	\$0	\$0	\$1,840	\$0	\$1,840	\$8,333	\$6,493
35	Bookkeeper	\$12,000	\$995	\$1,360	\$976	\$1,323	\$0	\$4,653	\$4,000	(\$653)
36	Office Supplies, Copier, etc	\$26,000	\$4,658	\$2,851	\$1,801	\$1,891	\$0	\$11,201	\$8,667	(\$2,535)
37	Sub-Total:	\$63,000	\$5,653	\$4,211	\$2,777	\$5,054	\$0	\$17,695	\$21,000	\$3,305
38	Buildings and Grounds:									
39	Facilities Manager	\$20,000	\$0	\$1,385	\$1,736	\$904	\$0	\$4,024	\$6,667	\$2,643
40	Sexton	\$24,000	\$1,721	\$1,647	\$0	\$1,721	\$0	\$5,090	\$8,000	\$2,911
41	Utilities	\$47,000	\$1,200	\$11,372	\$1,200	\$4,273	\$0	\$18,045	\$15,667	(\$2,379)
42	Maintenance/Repairs	\$56,000	\$1,721	\$7,383	\$2,835	\$3,342	\$0	\$15,280	\$18,667	\$3,387
43	Sub-Total:	\$147,000	\$4,642	\$21,786	\$5,771	\$10,239	\$0	\$42,439	\$49,000	\$6,561
44	Worship/Liturgical:									
45	Music Program	\$55,000	\$5,697	\$5,128	\$5,993	\$5,785	\$0	\$22,603	\$18,333	(\$4,270)
46	Altar/Flower Guild/Worship	\$13,200	\$267	\$1,000	\$2,626	\$0	\$0	\$3,893	\$4,400	\$507
47	Sub-Total:	\$68,200	\$5,964	\$6,128	\$8,619	\$5,785	\$0	\$26,496	\$22,733	(\$3,763)
48	Youth Formation:	\$45,000	\$2,744	\$2,310	\$2,954	\$3,949	\$0	\$11,958	\$15,000	\$3,042
49	Parish Outreach:									
50	Diocesan Pledge	\$22,393	\$0	\$4,000	\$0	\$0	\$0	\$4,000	\$7,464	\$3,464
51	Dir/Outreach (20%)	\$10,000	\$1,546	\$942	\$1,143	\$1,143	\$0	\$4,774	\$3,333	(\$1,441)
52	Rect. Disc/AIM/Christ Child	\$7,000	\$475	\$1,148	\$0	\$5	\$0	\$1,627	\$2,333	\$706
53	2nd Time Around Grants	\$20,000	\$203	\$204	\$9,208	\$2,495	\$0	\$12,109	\$6,667	(\$5,442)
54	Toni's Kitchen Operation	\$164,000	\$22,805	\$12,698	\$26,430	\$11,573	\$0	\$73,506	\$54,667	(\$18,840)
55	Sub-Total:	\$223,393	\$25,029	\$18,992	\$36,781	\$15,215	\$0	\$96,017	\$74,464	(\$21,553)
56	Parish Committees:	\$13,750	\$962	\$470	\$908	\$285	\$0	\$2,625	\$4,583	\$1,958
57	Building Capital Repair	\$0	\$0	\$2,684	\$11,988	\$19,000	\$0	\$33,672	\$0	(\$33,672)
58	<b>Total 2013 Expense</b>	<b>\$785,143</b>	<b>\$71,184</b>	<b>\$68,739</b>	<b>\$84,083</b>	<b>\$80,415</b>	<b>\$0</b>	<b>\$304,422</b>	<b>\$261,714</b>	<b>(\$42,708)</b>
59	<b>Recap</b>									
	Total 2013 Income	\$786,500	\$98,064	\$54,382	\$102,371	\$80,054	\$0	\$334,871	\$262,167	\$72,704
	Total 2013 Expense	\$785,143	\$71,184	\$68,739	\$84,083	\$80,415	\$0	\$304,422	\$261,714	\$42,708
	Operating Surplus/(Deficit)	\$1,357	\$26,879	(\$14,358)	\$18,288	(\$361)	\$0	\$30,449	\$452	\$29,996

# ASSISTANT TO THE RECTOR REPORT

The Rev. Diana Wilcox

*"The gifts he gave were that some would be apostles, some prophets, some evangelists, some pastors and teachers, to equip the saints for the work of ministry, for building up the body of Christ..." - Ephesians 4:11-12*

What a "joy filled, Christ centered" year this truly has been! As my role has shifted from Seminarian to Deacon to Priest, I have had the privilege to serve here - engaging in and supporting a variety of ministries, and as the Spirit works, being transformed in the process. As John Mennell's Assistant, I meet regularly with him, and support him in his work. In addition to participating in Vestry and other administrative meetings and roles, I have been engaged primarily in worship, spiritual enrichment, pastoral care, small affinity group development, youth, and as the clerical point for our cluster relationship with Holy Trinity in West Orange (see below for more information).

I want to thank you all for your love and support in this past year, especially for the beautiful ordination service. It has truly been a blessing to serve this congregation, and I look forward to being a part of all the Holy Spirit has in store for St. Luke's in the year to come.

## Worship

In addition to assisting John Mennell in the liturgy of the Word and Sacrament, and assisting or leading at funerals and weddings, part of my role is to work with worship ministry leaders on scheduling and training of service participants, and set up for worship on Sunday. This past year, working with Will Hobbie, we trained over 15 youth to participate as acolytes, and now we have a full team of acolytes on most Sundays, and a customary to help anyone learn how to serve. We also were able to train new lectors, with more experienced readers, including Kathleen Kellaigh and Penny Vance, working with the newest members of the team. Working with Karen Thompson, the Licensed Eucharistic Visitors (LEV), who visit and bring communion to those who cannot be with us on Sunday, are now being sent out from worship with the elements nearly every week. In the next year, we hope to expand both the LEV and the Healing Teams. For most of the year, I worked with John Mennell on the Wednesday evening healing Eucharist, and now I lead that service most weeks.

## Spiritual Enrichment

In the past year, I led a three part series in Epiphany on prayer, a two part series on the Gospel of Luke, a three part series on the Epistles (with a focus on the works of Paul), and a single session using the sermon delivered by the Rt. Rev. Michael Curry at General Convention 2012. I trained facilitators for the Wednesday evening reflective bible study, and led the group as well.

## Pastoral Care

I assist John Mennell in visiting those who are in need, including hospital visitations and Eucharistic visits to shut-ins. I also assist him in meeting with those who are in need of pastoral counseling.

## Small Affinity Groups

While I started the Women's Group in the fall of 2011, 2012-13 included a fall retreat, and an Art & Performance event - the Women's Spirit Weekend. In the year to come, I look forward to working with our PCBCs (Post-College/Pre-Children) to develop a program for them, as well as with John Mennell and parishioners to discern other areas of interest.

## Youth

This past year saw the introduction of a Youth Group for high school-ers, and they will be heading out on their first Mission Trip this summer. I meet with them every other week on Sundays at 5:00 p.m. Next year, working with Kathy DeWalt, I will be launching a Middle School Youth Group as well. At John Mennell's request, I took on the Confirmation Class this past January. We met and engaged in discussion and prayerful discernment, and at the end of the program, four of our youth were confirmed: Amber Davies, Michael Cohen, Grace Mennell, and Kelsey O'Connor.

## Holy Trinity West Orange

John Mennell and I have worked with the bishop and his office on the development of a relationship with Holy Trinity West Orange (HTWO). Located two miles from St. Luke's, Holy Trinity is a small community with a tremendous amount of ministry - a food pantry that feeds hundreds each month, a soup kitchen, and a thrift store. They have been without the means to have full-time clergy, and prior to our involvement, have been relying on long-term supply priests to lead worship. We believe that working with them will enhance both



congregations, and we are opening our hearts to the guidance of the Holy Spirit as we move boldly forward where God is leading. Our arrangement with them also helps to financially support my full-time role as Assistant to the Rector, as both the diocese and Holy Trinity, have contributed to my salary.

Working with John Mennell, I developed a draft Cluster Ministry Covenant, which has been reviewed by the St. Luke's Vestry and the Executive Committee of Holy Trinity (a mission church has an Exec. Comm. rather than a Vestry). While we determine the best way forward, I have been serving there two Sundays a month, with another St. Luke's parishioner, the Rev. John Marcantonio, serving there the other two. John Mennell takes the lead on fifth Sundays. John Mennell and I lead their Executive Committee meetings, their Annual Meeting, and we have been working with Jay coordinating with Jay Richardson on the sharing of facility services to bring cost savings to both congregations. I have also found a new Music Director when theirs resigned, and connected outreach ministry leaders at both parishes. Parishioners from St. Luke's have worshipped there, and vice versa. Several of the Holy Trinity members have also participated in Spiritual Enrichment opportunities, and other groups or events here.

#### Other

I am also engaged in diocesan work, including serving on the Interfaith and Ecumenical Commission, attending clergy conferences and meetings, serving as the Young Adult Chaperone to General Convention 2012, and recently, on Diocesan Council. I am also a principal videographer for the diocese, completing the third video for convention featuring the highlights of activities of the past year, as well as a tribute video honoring Michael Francaviglia, also shown at Convention.

I continue to serve as the Protestant Chaplain at Montclair State University, leading worship there on Sunday afternoons during the academic year. That chaplaincy is supported by an ecumenical group of clergy in the area, and by our own diocese through Alleluia Fund and OASIS grants. This past year I worked with the Rev. Tom Murphy to establish an Episcopal Chaplaincy at Drew University, and to have that serve as a possible field placement site for those in the ordination process. It is now being run by Chaplain Cathie Studwell, a postulant in our diocese.

## **WORSHIP: ACOLYTES**

The Rev. Diana Wilcox

*"I have come as light into the world, so that everyone who believes in me should not remain in the darkness."*  
— John 12:46

The word "acolyte" comes from the Greek word "akolouthos," which means a servant or attendant who waits on another. Acolytes assist the clergy in the liturgy of the Word and Sacrament, lighting the candles and carrying the torches and cross in procession. Acolytes may also serve by carrying the censor (thurible) when incense is used. The light bearing duties of the Acolyte are symbolic of bringing the light of Christ into our lives. This past year, Will Hobbie and the Rev. Diana Wilcox trained over 15 youth to participate as acolytes, and we now have a full team of acolytes on most Sundays, and a customary to help anyone learn how to serve.

We are especially grateful to all those who serve (and for the youth – their parents as well):

#### Acolytes Adults:

Stephanie Borsi  
Karl Hartzell  
Will Hobbie  
Tim Mannion  
Matt Peinovich  
John Williams  
Rebecca Williams

#### Acolytes Youth

N'Adom Appiah Pipim  
Eron Eden  
Theo Hobbie  
Jackson Marcantonio  
Arjun Nischol  
Armaan Nischol

#### Youth Cont'd

Grady Short  
Sally Short  
Hannah Williams  
Jessica Williams  
Nicholas Williams  
Ben Wyatt

While there are no meetings for this ministry, you must be trained in order to serve. If you would like to join the Acolyte team, please contact either Will Hobbie or the Rev. Diana Wilcox.

## WORSHIP: ALTAR GUILD

Martha Thalheimer

The Altar Guild is a dedicated group of individuals who work throughout the year to make all our worship services special. Thank you to all the members who share their time - Myrna Bennett, Gordon Frey, Marcelle Gaia, Lynne Graham, Carol Heick, Sally Kress, Betty Malone, Ann Marguet, Ellen Meriney, Catherine Murray, Pauline Petrus, Barbara Schnell, Daune Slater, Felisa Van Liew, and Ellen Woods. We said goodbye this year to Janet Chisholm, Wynde Eberle, Margi Jenkins and Katherine Marano – they are missed. Special thanks to Ellen Meriney for washing and pressing and Sally Kress for being my 8:00 a.m. Sunday contact person. If you would like to join us, please let any one of us know. We would love to have you!

## WORSHIP: COUNTERS

Steph Borsi

Thanks to all of you who have helped count the contributions this past year - Tim Mannion, Harry Mayo, Martha Thalheimer, Janet Chisholm, Don Moore, Doug Eberle, Nancy Alberga, Sue Villarosa, Caty Borsi, Art Borsi, Tom Cochran and Stephanie Borsi. Every Sunday a team of two counters meets after church and, well, counts! We log all of the pledged cash, checks, and the donations for AIM, Flowers, Music, Toni's Kitchen, Rent, and other miscellaneous contributions that may come in. On the surface this might seem like a dull, mundane job. But as so often happens in groups that are involved at St. Luke's, we actually have a good amount of fun! The counting job itself can be tricky - for those of us who are math-challenged, who have illegible handwriting, or who have trouble concentrating while drums are beating in the background (thanks to the Baptist congregation who uses our church). But throughout the year there are times when it just doesn't make sense to count on Sunday morning. With all that goes on at St. Luke's, we aren't always willing to skip an activity to count money, and we make plans to meet on a weeknight instead. Someone will offer their home and we find ourselves involved in an impromptu counting/dinner party! If you'd like to join this fun-loving group, please see Stephanie Borsi.

## WORSHIP: FLOWER GUILD

Tim Mannion and Gordon Frey

The Flower Guild of St. Luke's Episcopal Church serves the parish by providing fresh flowers and general decorating advice and support for all efforts to beautify our worship and social events. As the Bible says: *"Consider the lilies of the field, how they grow; they neither toil nor spin, yet I tell you, even Solomon in all his glory was not clothed like one of these. But if God so clothes the grass of the field, which is alive today and tomorrow is thrown into the oven, will he not much more clothe you—you of little faith?"* - Matthew 6:28-30

The flowers remind us of the joy we can find in common things. Fabric and flowers are things we pass by every-day, but when skillfully arranged and displayed, they become works of surpassing beauty, reminding us of the joy we all find in Creation. We work nearly every Saturday morning throughout the year, arranging things for the next day's worship. We rest (only slightly!) during Advent and Lent, but we are busy planning great things for Christmas and Easter during those days we are not actually arranging flowers, just as the Church 'rests' in preparation for the festivals to follow.

Gordon Frey and Tim Mannion are the leaders of the ministry, but all the members of the parish are participants by virtue of their monetary support in providing donations for specific memorials and thanksgivings.

For several years, the Flower Guild has been overspending its budget. We rely upon the generosity of parishioners to support this ministry by providing funds for the purchase of flowers and supplies such as floral foam and tape, clippers, replacement vases, etc., even ribbon and light bulbs! We are planning to introduce a new policy this summer: if we *don't* receive a floral memorial or thanksgiving for the coming week, we will *not* have fresh flowers in the church. This is a sound policy that has been adopted by several other Episcopal churches that we know of; as unfortunate as it is, we cannot afford to continue spending without reimbursement into the flower fund.

Memorials and thanksgivings can be made at any time by writing to [flowers@slechurch.org](mailto:flowers@slechurch.org), and we will be happy to work with you! A general Sunday offering for flowers costs about \$80, and doubling up a donation with your friends is easy and painless.

The special flower work we do on Holy Days and for church seasons such as Advent, Christmas, Lent, Palm Sunday, Easter and Pentecost are legendary, and could not happen if they did not involve a host of helpers. During the past few months, the following people have helped: Lovie Abner, Myrna Bennett-Jackson, Alison Bolshoi, Mark Dillon, Nancy Donaldson, Will Hobbie, Pauline Petrus, Pat Sullivan-Perry, Martha Thalheimer, Sue Villarosa, Lisa Williams, and many others. If we've missed your name, please accept our apologies, but know that we certainly didn't miss your help! Thank you!

### **WORSHIP: HEALING PRAYER**

The Rev. Diana Wilcox

Healing prayer is perhaps best summarized in the phrase: "Christian healing is Jesus Christ meeting a person at his/her point of greatest need." Jesus does the healing, not us. Those praying are channels of God's healing power and love. The "Gift of Healing" is given to those for whom we pray, not to those who do the praying." The St. Luke's Healing Prayer Team is made up of ministry members who provide private prayer and 'laying on of the hands' at each 10 o'clock service. We dedicate our hands and the spiritual touch provided to ask for God's healing through our prayers and blessings. We all have a special interest in prayer for healing. A loving "thank you" to members Kathy DeWalt, Godfrey Gregg, Stephanie Borsi and Karen Thompson.

### **WORSHIP: LAY EUCHARISTIC VISITORS**

The Rev. Diana Wilcox

Another important group at St. Luke's is our licensed Eucharistic Visitors who visit sick and home bound parishioners and bring them prayer, a listening ear, and the Eucharist, and we'd like to warmly thank Ana Marie Forsythe, John Raposa, Susan Singer, and Karen Thompson. A short, interesting, training is offered by the Diocese for this ministry annually. The team meets monthly, or as needed. Useful skills include interest in healing in Christ's name, compassion, trust for each other, and confidentiality. We are very interested in adding new members and there will be a local half-day retreat in the autumn 2013 open to all interested parishioners who would like to explore this ministry further. Please contact Karen Thompson for additional information. A special thanks to the Reverend Doctor Sonia Waters for her guidance with the group for half of this year. Thank you for all of your support, members and parishioners!

## WORSHIP: LECTORS AND INTERCESSORS

The Rev. Diana Wilcox

*"The Lord God has given me the tongue of a teacher, that I may know how to sustain the weary with a word."*  
- Isaiah 50:4a

*"Rejoice always, pray without ceasing, give thanks in all circumstances; for this is the will of God in Christ Jesus for you."* - 1 Thessalonians 5:16

Lectors are those who have been trained and certified to read the Holy Scriptures during the Liturgy of the Word. The Liturgy of the Word is the first part of the service where the readings from the Hebrew and Christian sacred texts are read. Lectors read from the Hebrew Testament, lead in the recitation of the Psalm, and read from the Epistles and other Christian Testament books (except the Gospels, which are read by a Deacon or Priest during a Eucharist).

While generally an Intercessor within the church is one who serves as a mediator between a person in need and God, within the Liturgy of the Word, Intercessors lead the congregation in offering the Prayers of the People. Intercessions to God are offered by all of us as a body - not only for ourselves, but also for the church and for the world.

Recently we trained new Lectors & Intercessors, with more experienced readers, including Kathleen Kellaigh and Penny Vance, working with the newest members of the team. We are grateful for all who serve in this ministry of the Word:

### Lectors/Intercessors 8:00

Ana Mari Forsythe  
Dall Forsythe  
Sally Kress  
Keith Kaweck  
Barbara Schnell  
Rich Schnell  
Suzanne Poor  
Walter Booker  
Felisa Van Liew  
Susan Singer

### Lectors/Intercessors 10:00

Pauline Petrus	Rebecca Williams
Tim Mannion	Ken Dalton
Mike Peinovich	Martha Thalheimer
Chalene Dalton	Lisa Williams
Bill Hearst	Mike Alberga
Jessica O'Donnell	Felisa Van Liew
Kathleen Kellaigh	Lisa DeLorenzo
Rob Smith	Molly Williams
Gordon Frey	Mia Balsamo
Ron Hoglund	Ana Mari Forsythe
Penny Vance	Dall Forsythe

If you would like to serve as a Lector or Intercessor, training is required, so please contact the Rev. Diana Wilcox for more information.

## WORSHIP: LITURGICAL EXPERIENCES COMMITTEE

Kathleen Kellaigh

Which one doesn't belong? A) Shadows B) Seashells C) Cinnamon candies D) Sage E) Projection Screen.

It was a trick question. They ALL belong as part of this year's offerings from the Liturgical Experiences Committee!

The success of last year's Shadow Stations of the Cross, assured that the Tuesday of Holy Week would again feature that moving, meditative, and visually stunning service. The cast included both "shadows" and readers who helped tell the story of Jesus' journey to the cross and tomb, and challenged the congregation to examine their own lives, motivations, and relationship to their neighbors.

For the first five Sundays of Lent, we brought a new service to St. Luke's:

Sensing God Compline. Each evening featured a theme and those who attended brought things to share for each of the five senses. A striking image projected on the screen, scents, tastes, a piece of music or sound of nature, an object to touch allowed us to engage on multiple levels as we concluded our day with this extraordinarily calming monastic service.

Chair, Kathleen Kellaigh, thanks the many who participated in both Lenten Liturgical Experiences, shadows, readers, senses sharers, and committee members Tim Mannion, Gordon Frey, Angie Rispoli and John Mennell. If you would like to join the committee in planning new and exciting services for our parish (like the upcoming Worship Without Walls services, summer Sundays at 5pm, the location is released by text the day of the service [text STLUKESMTC to 41411 to subscribe]), contact Kathleen Kellaigh.

## WORSHIP: USHER MINISTRY

Wendell Bristol

*"Therefore welcome one another as Christ has welcomed you, for the glory of God." - Romans 15:7*

Ushers welcome people into our church, guide people through the service, and move goods (like communion wine and donations) to and from the altar. We facilitate smooth traffic flow to and from the altar during communion. We provide friendly faces and help throughout the service to those who are new to Saint Luke's as well as seasoned parishioners.

The Ushering Ministry is living into the vision for Saint Luke's at each worship service. Ushers provide the first friendly face people see when they walk in the door; so good ushering can help us to increase our membership. We need to increase the number of ushers to help with the growth and development of the church as we institute more worship services.

Ushers primarily work on Sundays only, usually during the 10:00 a.m. service only. However we need many ushers to serve on all Holy Days, such as Easter, Christmas Eve, Christmas morning, Palm Sunday, and weeknights during Holy Week. Except for these special times, ushers can expect to serve one Sunday a month.

Training is given once a year after Sunday service given by the Rector. We have a written training manual. In order to be an usher, people need the following:

- A warm smile
- A positive outlook on life; a cheerful demeanor
- A person filled with the Holy Spirit
- A clean and neat appearance

Thank you to all my current, friendly and flexible ushers:

Mike Alberbga	Mike Peinovich	Angie Rispoli
Monique Balsamo	Lynne Graham	Sally Short
Mia Balsamo	Karen Malone	Elaine St. Claire
Wendell Bristol	Ann Marguet	Reese Stone
Betsy Burgess	Henri Marguet	Bruce Stransky
Jill Eden	Oneida Mendez- Laws	Martha Thalheimer
Funmi Fashun	John Morey	Robert Weber
Billie Gliessner	Catherine Murray	Rebecca Williams
	Enuma Okuzu	Karl Hartzall

## OUTREACH: ACTION IN MINISTRY (AIM)

Michael Alberga – Committee Chairperson

The AIM (Action In Ministry) Fund takes offerings during services on the first and third Sundays of each month, which are 100% designated for outreach with grants dispatched to worthwhile organizations that operate in international, national, regional and local venues. For instance, in 2012, grants amounting to \$4,000 went to Paterson Habitat For Humanity, Montclair Protestant Foundation (for support of Montclair State University Protestant Chaplaincy Program), American Cancer Society (Relay for Life), Doctors Without Borders, Montclair YMCA (support for their summer camp program), as well as our own Toni's Kitchen.

This year, so far, we have dispatched our annual grant to Montclair Protestant Foundation for support of the Protestant Chaplaincy Program at Montclair State University. Additional designations are pending for Episcopal Relief & Development, Habitat For Humanity, Montclair YMCA Summer Camp, Seamen's Institute in Port Newark, Relay For Life, Crop Walk, Relay For Life, as well as Battle Against Hunger (Toni's Kitchen).

## OUTREACH: CROP WALK

Michael Alberga – Committee Chairperson

CROP Walk is sponsored and organized by Church World Services, and the St. Luke's community customarily participates every year. Participants volunteer to raise contributions from friends and relatives and commit to the walk, which takes place on the second or third Sunday in October. Contributions go through Church World Services to fight hunger and poverty both in developing nations as well as locally. Toni's Kitchen receives Crop

Walk grants in most years. This provides an excellent opportunity for participation with other parishes of all denominations for raising awareness of hunger and poverty, even in relatively prosperous environments.

## OUTREACH: GREEN TEAM

Steph Borsi and Anne Mernin

*“But ask the animals, and they will teach you; the birds of the air, and they will tell you; ask the plants of the earth, and they will teach you; and the fish of the sea will declare to you. Who among all these does not know that the hand of God has done this? In the Creator’s hand is the life of every living thing and the breath of every human being.” - Job 12:7-10*

The Green Team is a group dedicated to building awareness and to identifying and implementing eco-friendly projects at St. Luke’s. This past year we started our work, launching the first project - replacement of the Styrofoam coffee cups (used for St. Luke’s coffeeshours and other events) with ceramic mugs. This project alone will protect our planet for decades to come from the hundreds of non-biodegradable cups that would have been tossed into landfills. The people of St. Luke’s responded to our call for donations of mugs, and the program has been a great success.

Next year, we hope to do far more to help protect and renew our planet, as part of our commitment to honor and care for all of God’s creation. We meet a few times each year, and we are always looking for others who might like to be a part of this ministry. For more information, please contact Stephanie Borsi or Anne Mernin.

## OUTREACH: OUTREACH COMMITTEE AND SPONSORED EVENTS

Catherine Murray

The name of this Ministry is the Outreach Committee. We are funded through the A.I.M. (Action in Ministry) Baskets that are passed around on the first and third Sundays of the month, as well as other direct donations from parishioners.

*A generous man will himself be blessed, for he shares his food with the poor. – Proverbs 22:9*

*Give, and it will be given to you. Good measure, pressed down, shaken together, running over, will be put into your lap. For with the measure you use it will be measured back to you.” – Luke: 6:38*

The Outreach Committee helps St. Luke’s parishioners joyfully seek and serve Christ by collecting funds and goods, and then distributing them to various charities and individuals. We live in the vision of the Church and its parishioners by targeting people and organizations that need our help. We meet on the third Sunday of the month at 11:30 a.m. The work is then done according to the agreed-upon schedule. Catherine Murray is the Chairperson of the Committee and our Committee Members are: Anne Mernin, Pat Moulton, Jim Snodgrass, Jill Eden, Stephanie Borsi and Mike Alberga. People who are often successful on this committee have organizational skills, detail orientation, and a willingness to volunteer to organize and participate in our various events and drives. There is no training necessary to be a member of this Committee. If you would like to join us, please contact Catherine Murray at [murray@slechurch.org](mailto:murray@slechurch.org).

The Outreach Committee contributions are designated specifically for outreach for our towns, our country and the world. As a result of your contributions to the dark red A.I.M. baskets, the following donations were made during 2012 and into the early months of 2013:

1. YMCA of Montclair \$800.00
2. Montclair Protestant Foundation \$1,500.00 for support of the protestant chaplaincy program at Montclair State University.
3. Church World Services \$ 380.00 for support of Crop Walk.
4. Paterson Habitat for Humanity \$125 for “Hammering for Habitat” Event
5. Relay for Life (American Cancer Society) \$808.00
6. Doctors without Borders \$735.00
7. Toni’s Kitchen \$185.00

A.I.M. also provides funding for the Christ Child Project, which includes annual support for the men of Apostles House for which our choir and friends provide clothing and toiletries, as well as hams for Christmas dinner. This is done under the very capable leadership of Stephanie Borsi.

We have set up a calendar this year, to agree on where contributions given in each month will be donated, as follows:

January & February: Chaplaincy Program at Montclair State University

March: St. Phillip's Academy in Newark

April: Habitat for Humanity

May: Relay for Life

June: YMCA to sponsor a child for Summer Camp

July: North Porch (A diocesan shelter in Newark for mothers and children)

August: Battle Against Hunger

September: Crop Walk

October: Seamans' Church Institute in Newark

November & December: Roseanne Morey Christ Child Programs

In addition to collecting and distributing funds, the Outreach Committee also offers volunteer opportunities to our parishioners.

### **Habitat for Humanity:**

On Saturday, May 11, six parishioners (Catherine Murray, Mike Peinovich, Jill Eden, Lori Nischol, Rebecca Williams and Judy Carlough) went to Newark and helped renovate a two-family house. Thanks to all who volunteered that day.

### **Souper Bowl of Caring:**

We participate in the Souper Bowl of Caring every year, which is an annual event on Super Bowl Sunday that benefits soup kitchens nationwide. All of our donations of food and money go to Toni's Kitchen.

### **The Outreach Committee's Mission:**

The mission of the Outreach Committee fund is to distribute 100% of contributions to worthy organizations who operate in the local, national and international arenas to help people in distress by their efforts to enhance educational opportunities, and by alleviating poverty and hunger. These donations are primarily made possible by generous donations from our members, so please remember to put your offerings in the dark red baskets on the first and third Sundays of each month.

## **OUTREACH: RELAY FOR LIFE**

Janet Chisholm & Stephanie Borsi – Co-Captains

We may be looking a little bleary-eyed this morning - but with good reason. Our Relay for Life team - The Temptations - participated in our 9th Relay event just last night! We have a wonderful team of: Rachael Gareau, Roxie Zeek, Pat Moulton, Jim Snodgrass, Sandy Mordecai, Caty Borsi Perry McKinney, and Stephanie Borsi. As of May 15, we have raised \$5562, making the Temptations a Gold Team and surpassing our goal of \$5000!

Those of us who participate in Relay do it in honor of people we love who have lost their battle with cancer, who are in that battle right now, or who are "cancer-free" and have that battle behind them. The person that I walk in honor of has been "cancer-free" for ten years, and although we celebrate that milestone, it occurs to me as the years go by that "cancer-free" is a misleading term. It never really goes away entirely. It is always there and always in the back of her mind.

Relay for Life is an overnight event that raises money for the American Cancer Society. It begins with the Survivor Lap - when we all cheer on those who have survived cancer. Our survivors include Gordon Frey, Donald Moore, Harry Mayo, Diana Wilcox, Oscar Mockridge, and Nancy Coggins. The second lap is the Caregiver Lap, when we honor the caregivers among us. The third lap is for everyone and Relay officially starts! When it grows dark, the Luminaria Ceremony is held - the most emotional part of the evening. The track is surrounded with white bags that have been decorated with the names of those we are walking for. These names also appear on a screen over the track. These bags are lit and we walk a silent lap in tribute to all those who we are honoring or remembering.

The Temptations set up a "campsite" with tents that are rarely used for sleeping. We are easy to spot with our large St. Luke's banner! When we're not walking around the track, this is where we stop for breaks. Diana Wilcox will lead us in a Eucharist service and we will take the time to pray for those we're walking for.

We want to thank our supporters - Sue Villarosa who always provides us with food to eat throughout the event, Tim Mannion who stops by late in the evening to offer moral support, Rachael's fiancé who shows up with



coffee in the middle of the night, Lisa Williams who has offered to do the same - and to all of you for your donations and for your prayers.

I think that we all agree that losing a night's sleep is much easier than what our family/friends have gone through in fighting cancer. We look forward to the day when there is no more cancer and Relay for Life will no longer be a needed event. Until then, we'll keep walking!

## OUTREACH: SECOND TIME AROUND SHOP

Ellen Meriney

The Second Time Around Shop, located in the basement of St Luke's Church, is one of the activities of the churchwomen (and a few men and youth), and is aided by 8-10 friends of members as well. Some students from local schools fulfill their community service requirements on a Saturday. Donations of clothing for the whole family, jewelry, household items, novels, cookbooks, children's books, toys, collectibles and other small items are gratefully accepted from the parish as well as from the community.

Some 40+ volunteers staff the shop and work sorting, pricing, pressing, mending and selling to customers from Montclair and surrounding communities. A BIG THANK YOU goes to the following St. Luke's parishioners:

Carolyn Blondel  
Ellen Woods  
Stephanie Borsi  
Lois Lawrence  
Sonia Cole  
Debbie Van Exel  
Twyla Banitch  
Betty Malone  
Oneida Laws  
Sue Villarosa  
Pauline Petrus

Ana Marie Forsythe  
Sally Kress  
Marcelle Gaia  
Catherine Murray  
Ann Marguet  
Martha Thalheimer  
Nancy Alberga  
Elsie Lockett  
Margaret Lockwood  
Ellen Bakalian  
Nancy Donaldson  
Jana Cordosa

Cathie Mazza  
Lovie Abner  
Barbara Schnell  
Gordon Frey  
Monique Balsamo  
Joy Winnik  
Brenda Stone  
Nancy Alberga  
Ellen Meriney  
Angie Rispoli  
Adriana Dumitrescu  
John Morey

We offer half price sales once a month and \$5 bag sales twice a year, which help to attract new customers and definitely increase profits. All of this activity has allowed us to make a pledge to the Vestry and contribute to special projects: United Way Holiday and Camp Funds, Montclair Volunteer Ambulance, Crossroads Outdoor Ministries, ECW Diocese of Newark, YCS Therapeutic Learning Center, Habitat for Humanity-Patterson, Marg Christie Fund (Diocese of Newark), Relay for Life-Montclair, HOMECORP-Montclair, Alanon/Imani, Episcopal Relief and Development, Seaman's Church Institute, Montclair Protestant Foundation, and Doctors Without Borders. We also contribute to the clothing needs of Toni's Kitchen, Seaman's Church Institute (Port Newark), North Porch Infant Center, and other charities in the area. Among our volunteers are feelings of fellowship and of fulfillment in being able to help others. Come join us!!

## OUTREACH: TONI'S KITCHEN

Anne Mernin - Director of Outreach

*"This service that you perform is not only supplying the needs of God's people but is also overflowing in many expressions of thanks to God." - 2 Cor. 9:12*

### The Role of Outreach at St. Luke's

St. Luke's Outreach is where we extend ourselves into the community and the world. We respond to God's call to feed the hungry, clothe those in need, and welcome the stranger. In doing so, we express our faith to the larger community. At St. Luke's we embrace this call as our joyful work.

### Summary Statement

A little more than a year ago, Toni's Kitchen celebrated its 30<sup>th</sup> anniversary. In doing so, we took the opportunity to step back and look at the work of Toni's Kitchen and how we were responding to God's call to support those most in need in our community. We saw that hunger was growing rapidly in certain segments of our population, particularly retirees and the working poor. Some seniors were slipping into homelessness. Connections with basic health care were becoming increasingly difficult. The core role of nutrition was clear.

This year, we have laid a better foundation for addressing these growing needs going forward. We have focused on nutrition, improved connections to supportive services, and addressed our organizational ability to respond to this calling going forward. We are feeding more people, but we are also beginning to respond to underlying issues that threaten their independence and lift their spirits and confidence. Through this joyful work, we express our faith practice to reach into the world and serve those who are in need.

#### Who Do We Serve?

Toni's Kitchen serves several populations. Some are truly homeless, living in their cars or sleeping on benches. Most of these individuals have significant mental health issues that go untreated. They are quite literally incapable of taking the steps that we as a society demand of them in order to connect with housing. They cannot access the social safety net and are fully dependent on feeding programs for day-to-day survival.

Many are the working poor. They are sometimes undereducated and working a patchwork of jobs. Some have college educations but had a significant event that caused them to lose their grip. They are climbing their way back but the process is slow and littered with hurdles.

There is a number that just don't have the intellectual capacity or the mental health needed to navigate jobs, housing, family. These individuals are often in their 50s or 60s and their caregiving parent has passed, leaving them to fend on their own. Some are younger and have family but their ties have worn thin, whether from their high care-giving demands or from the financial stress of an adult dependent child. They are truly on their own.

The fastest growing segment of our guest population is our senior citizens. Our seniors are finding they can't keep up with cost of housing, in particular, but also transportation, utilities and food. Many do not have adequate access to health care.

#### **Traditional Lunch Program**

Our core lunch program continued to show strong growth in numbers (we went from 9169 meals in 2007 to 13304 meals in 2012). As we responded to this growth, we also realized we needed to professionalize our kitchen operations. As a result, Pat Moulton created a new Menu Planning process. This process focuses on the high nutrition needs of our guest population, recognizing high levels of diabetes, hypertension, and obesity resulting from poor nutrition and limited access to health care. In addition, Jill Eden created a new Inventory Management process, to upgrade our food storage processes and reduce our costs. We have just brought on a new volunteer to review and upgrade our food handling practices and kitchen safety. Jim Snodgrass also upgraded our financial reporting to help better understanding and manage our rising food costs. Purchasing practices were also re-focused to reduce cost and better leverage community donations.

There is much work to be done here. We would love to have volunteers help with kitchen operations in a variety of ways. New volunteers are always welcome.

#### **Sunday Meal Program**

Toni's Kitchen added a Sunday meal program beginning April 1, 2012. We started small, serving 20-30 meals, and are now consistently serving 55-60 meals each Sunday evening. Some who eat with us on Sunday evenings are not with us on other serving days, others we see during the week as well. We are particularly grateful for our senior citizen guests who come on Sunday evenings and take with them food to help through the following week. Sunday meals are served by families and community groups. We are thankful to Leslie Slezak for her leadership role in this new program.

#### **Community Meals**

Toni's Kitchen began experimenting with taking food out into the community where there are unmet needs. We started with a small program held in a local school as a pilot. There we found a tremendous reception as a part of the community often overlooked in the discussion of food need was able to come together around food and discuss other related needs. We expect to do more of this type of outreach in the coming year. We would love to have some leadership volunteers from St. Luke's involved with this very exciting new initiative!

#### **Education Programs**

Nutrition and Health – Pat Moulton has surveyed our guest populations to understand their specific nutrition and health needs. In doing so, she has partnered with college students, community groups, and others to bring targeted nutrition and health education on-site. The response to these programs has been overwhelming, often with standing room only for classes such as Diabetes and Nutrition; Healthy Shopping on Food Stamps, etc. In

addition, St. Michael's Medical Center, Mountainside Hospital, and others have come on-site to provide education related to diabetes, hypertension, certain cancers, and more.

Skills Training – Toni's Kitchen continues to provide on-site one-on-one training for individual guests who are in need of support. These trainings have included the basics – learning to set up an email account or do an internet search – to more substantial on-line programs for skills development. This program provides an opportunity for guests to receive one-on-one attention and support as they try to re-enter the workforce, re-connect with family or learn basic skills. Three volunteers run this program and we would love to have someone bring leadership and fresh eyes to the needs in this area!

Volunteer Training – Our volunteers are our dearest resource. They create the warm connections and the healthy food that sustains our guests. We are beginning to focus on how volunteers come in to Toni's Kitchen and ongoing training needs. We will be doing a series of short videos for our website with topics such as "Intro to Toni's Kitchen", "Knife Skills", and many other topics covering kitchen-related skills. Jump in if you'd like to help - we'd love to have you!

### **Social/Emotional Health Programs**

Art Workshops – Toni's Kitchen began Saturday afternoon art workshops in 2012. They are run by a talented local artist, Veronique Ramsey, and have produced truly thoughtful and inspiring work. Toni's Kitchen showed off work by its artists in the Montclair Art Walk 2013.

Memoir Classes – Memoir classes are held every other Saturday afternoon by two talented local writers, Alice Hurley and Elly Meeks. These classes recognize the importance of our stories and the healing quality of the narrative of our lives.

Toni's Living Room – Coordinated by St. Luke's member Jim Snodgrass, these afternoon programs give guests a place to go on days when public buildings are closed. Held in the Sawtelle Dining room, guests play Scrabble, Monopoly, watch movies or use the computer room.

Meditation – Sunday evening meditation classes are held from 4:00-5:00 before the dinner meal. They are a cherished moment in the week. We would love to be able to offer them more often and are looking for additional leaders.

Music – Allison Bolshoi from St. Luke's; the TNT Ramblers from Temple NerTamid; Kirk Woodard, a long-time supporter of Toni's Kitchen; and Mike Kenny, our regular Friday pianist; have all blessed our guests with music throughout the year. Our aim is to have music at 3 out of the 4 meals served each week. Several musicians from Montclair High School have also shared their music with us.

### **Important Partnership Programs**

Whole Health – This preventive program for Senior Citizens was launched in January of 2013 with funding provided by the United Way. Case managers, provided by the MHAEC, work with seniors to review their financial, physical, and social/emotional health. A 'gap analysis' is performed; identifying those areas that threaten continued independent living going forward. Resulting actions have included registration for senior housing, connection with transportation services, enrollment in available insurance programs, connection with medical providers, and social engagement opportunities. We have seen an overwhelming enthusiasm for this program with over 50 seniors currently enrolled. Volunteers are needed to help with occasional transportation needs and with phone inquiries, and general follow-up.

Mental Health Care – All visitors to Toni's Kitchen are welcome to use free on-site counseling provided every Thursday by the Mental Health Association of Essex County (MHAEC). These services have proven to be invaluable – with not just mental health support, but also opening doors to housing opportunities and other substantial supports available to those with significant mental health issues. This program provides tangible improvement to the quality of life for those who have used it. Many thanks to MHAEC for their skilled, thoughtful, and very effective counselors.

Second Time Around Shop – Toni's Kitchen is supported regularly by the generosity of our friends in the Second Time Around Shop. Each week, the Shop supports those in need with clothing, dignity and unbounded generosity. We are deeply grateful to Ellen Meriney and the many gracious volunteers at the Shop.

Succeed2gether – This partnership continues in its second year with on-site connections to Food Stamps, utility support, and other County-administered services. We have found that bringing these services on-site, in

an environment that feels safe and respectful, is much more effective. Guests who are not particularly good at filling out forms, communicating their needs, or those who struggle with basic literacy are more likely to seek out this support on-site. Succeed2gether also supports Toni's Kitchen with clothing and coat distributions throughout the year. We are deeply grateful for their partnership.

Montclair Health Department – Provides on-site blood pressure screenings monthly, counsels guests regarding their disease management, and provides on-site flu shots in season.

Mountainside Hospital – Provides monthly blood glucose screenings with associated counseling.

St. Michael's Medical Center – Conducts on-site screenings for particular cancers and also provides cancer education programs. St. Michael's has followed through on their commitment to treat identified cancers all the way through, even for those guests without insurance.

### **Student Partnerships**

Montclair High School - Toni's Kitchen continued its partnership with Montclair High School's Civics and Government Institute ("CGI") this year. Students have volunteered in our kitchen, played music during our meals, done special drives for us, and done special project work. We love our student volunteers!

MKA Upper School – Our work with students extended to the MKA Upper School this year. We have a strong partnership there with students volunteering in the kitchen every Sunday. We hope to expand this partnership to other areas going forward.

Immaculate Conception - We have also established a partnership with the Church of the Immaculate Conception with whom we serve Sunday evening meals once a month. The families and students have participated every month!

### **Additional Programs**

Guest Assistance –The close relationships formed during the meal program often make us aware of critical and urgent needs. We therefore maintain close relationships with social services providers in the community and regularly refer guests for assistance. In emergency circumstances, when there are urgent threats to our guests' well being and our community contacts are unable to cover the need on a timely basis, we sometimes intervene.

Gardening Program– Toni's Kitchen has been blessed with a large plot on a property owned by HomeCorp. A Master Gardener and a crew of additional volunteers tend this plot, and their bounty is served in our kitchen. We are actively recruiting additional volunteers in this area.

Sharing our Gifts – Toni's Kitchen is occasionally blessed to receive more in donated goods than it can use. We continue our longstanding partnership with the Human Needs Food Pantry to share canned goods. We also continued and deepened our partnership with the soup kitchen of Christ Episcopal Church in East Orange to share goods that may spoil. Pick-ups are done by Christ Church on a weekly basis. We have also continued our partnership established last year with the Interfaith Food Pantry of the Oranges, coordinated through Christ Church in Short Hills, to share canned goods. We are beginning to explore how we might also partner with Holy Trinity both in terms of food and shared volunteers.

Toiletries Program – This program was originally started at the suggestion of St. Luke's member Anne Mockridge. It provides guests with toiletries – toothbrushes and toothpaste, deodorant, shampoo, soap and washcloths, razors, etc. – on a regular basis. We have received donations from a wide variety of local schools, churches, temples and individuals in support of this initiative.

Warm Accessories – In the chill of winter, a warm hat or jacket can make the difference between health and pneumonia. Toni's Kitchen is blessed to be able to provide these items regularly throughout the winter season. Warm accessories are donated by volunteers, school groups, solicited on our website and, of course, provided by our treasured Second Time Around Shop when there is an urgent need we cannot otherwise cover.

### **Capital Investments**

Kitchen Renovations - Anne Mockridge continued the long-planned initiative to renovate the kitchen facilities used by Toni's Kitchen. In 2011, Phase 1 was completed, opening the flow between the kitchen and dining room and installing much-needed new cabinetry in the front section of the kitchen, as well as allowing the kitchen to be 'locked down'. In 2012, the pantry was significantly upgraded. The floor was tiled, the ceiling and walls cleaned up, metro shelving installed for improved storage, and the freezers were re-arranged. Anne has

worked with a team of volunteers this year to prepare drawings for the final phases of the kitchen re-do which we expect to have done in September of 2013.

New Freezer - Toni's Kitchen received a lovely and much-needed new freezer this year thanks to an anonymous donor. We are putting it to good use as we are now able to accept more donated food than previously, bringing down our food costs. Thank you!!

### **Financial Support**

Toni's Kitchen is uniquely supported by a myriad of small donations. We are a daily miracle - the coming together of hundreds of acts of generosity to put food on our tables. As we have seen growth in our numbers and in the depth of need within our community, we sometimes think of our little kitchen as a daily miracle of Christ feeding the multitudes with a few loaves and a couple fish.

Our financial situation continues to strengthen but again there is much work to be done. We have attracted some larger donors and need to learn to navigate this area. We are also trying to broaden our reach with smaller donors.

Our fundraiser this year had strong turnout, especially by St. Luke's, but it was not as profitable as last year's. However, we made strong connections in our community that are paying off with tangible benefits for our guests. We increased our revenue on our annual Battle Against Hunger bike ride in September, to over \$20,000, well ahead of last year's \$12,000 take. We showed strong support by riders from St. Luke's, including Will Hobbie, Pat Moulton, Jim Snodgrass, and John Wyatt. Our end-of-year donations for 2012 were sharply up from 2011 and we continued to receive financial support from the Diocese.

We also received a sizeable bequest this year, which will be used to fund capital improvement projects and to begin building a more substantial and appropriate reserve account.

### **Grants**

Toni's Kitchen received a substantial grant from the Montclair Foundation this year, which helped address growing food needs. We also received a program grant from the United Way to launch the Whole Health program. Toni's Kitchen was recently invited to submit a capital grant request to the United Way and we are hopeful to receive that grant to purchase a dedicated vehicle to transport food and support additional community programs.

### **In-Kind Donations**

In-kind donations continue from Whole Foods, Goya, Gina's Bakery, Nicolo's Bakery, and Mountain Rest Farm (Helen Geyer). We also benefited this year from a new relationship with Trader Joes, providing regular and substantial food donations each weekend. We are especially grateful to Ray and Jack Murray for their tireless weekend work transporting these donations to Toni's Kitchen.

We are blessed to receive regular donations from a variety of churches and temples that support our mission to feed the hungry. In addition, school groups, community groups, community gardens, and committed individuals think of us often. We receive gifts resulting from food drives, lemonade stands, toiletry drives, and community service projects.

### **Volunteers**

Toni's Kitchen currently engages over 350 active volunteers in the programs described above. We are deeply appreciative to the many St. Luke's members who have volunteered their time – especially Tom Cochran, Joanie Collyer, Jill Eden, Janet Hager, Carol Heick, Will Hobbie, Anne Mockridge, John Morey, Harry Moss, Rita Moss, Oneida Mendez, Pat Moulton, Ellen Meriney, Catherine Murray, Jack Murray, Ray Murray, Matthew Peinovich, Duane Slater, Leslie Slezak, Susan Singer, Norma Small, Jim Snodgrass, John Wyatt and more.

## FORMATION: BUILDINGS AND GROUNDS

Suzanne Poor and Will Hobbie– Committee Chairpersons

Building and Grounds Committee responsibility consists of the maintenance and repair of buildings, grounds and equipment: including supplies, insurance and custodial supervision following the Safety, Security, Savings and Aesthetics guidelines

### **Last years major accomplishments include:**

- New heating and cooling in the rectory
- New heating and cooling in the Parish Hall
- Heating in the Undercroft of the church
- PSE&G brought additional power into the Parish Hall. This expansion will allow additional electrical growth.
- PSE&G brought in a new natural gas line to the church which will allow the replacement of the oil fired heating units with gas fired units when the time comes
- Rectory oil tank was removed
- Parish Hall oil tank was removed
- New fire alarm system as well as all required fire extinguishers and a Knox Box were installed to be in compliance with the town fire safety requirements.
- New copper Yankee Gutter was installed over the sacristy. This will stop further water damage
- The flat roof over the 3rd floor of the Parish Hall was repaired. This will stop further water damage
- Planting: bulbs & annuals/ perennials in fall/spring
- Various members of the committee working on miscellaneous projects including curtains installed in parish hall offices and choir room, fixing drainage issues and other type of minor repairs.

## SPIRITUAL ENRICHMENT: COFFEE HOUR

Sue Villarosa

Sunday Coffee Hour is one of the most important and visible aspects of our St. Luke's community. It's that wonderful time after the service when we can relax with a little food and drink, visit with old friends, make new ones and enjoy the special fellowship that is the essence of our St. Luke's family.

At present there are 10 different teams of volunteers with each team being responsible for Coffee Hour only once every 10 weeks. While each individual commitment is relatively small, the rewards are great and enjoyed by all. The dedicated Coffee Hour volunteers prepare tea and coffee, provide cold drinks, bring various homemade and store-bought goodies, set it all out, and clean up afterwards. We're always looking for new faces to join the Coffee Hour teams – the more volunteers, the easier it is for everyone. So if you haven't yet volunteered to be on a team, see Sue Villarosa who will be happy to answer any questions and sign you up!

Many thanks to the special group of dedicated parishioners who have participated in Coffee Hour over the past year and to all of our current volunteers:

Joan Mayo  
Karen Carter  
Lisa DeLorenzo  
Kimberly Marcantonio  
Kathleen Kellaigh  
Penny Vance  
Will Hobbie  
Deborah Meyer  
Karen Vrotsos  
Elaine Matthews  
Pat Moulton  
Jim Snodgrass  
Rachel Cochran  
Ellen Woods  
Leslie Koons  
Jinni Rock-Bailey  
Enuma Okuzu  
Leslie Rawlings Slezak  
Betsy Ginsburg  
Charlene Dalton  
Daune Slater  
Elaine St.Claire  
Sonja Cole  
Meg Banitch  
Ellen Alexander  
Ron Hoglund  
Deborah Rose  
JoAnn Short  
Jim Short  
Billie Gleissner  
Mike Peinovich  
Twyla Banitch

Oneida Mendez-Laws  
Ann Marguet  
Brenda Stone  
Flo Whitten  
Wendy North  
Linda Paponette  
Carol McCarthy  
Marcelle Gaia  
Cathie Mazza  
Ellen Meriney  
Kathy Shanahan  
Elena Lopez  
Leah Wooding  
Angie Rispoli  
Roxie Zeek  
Anne Mockridge  
Betsy Burgess  
Lily Delmar  
Jessica O'Donnell  
Helena Proano  
Althea Goodison-Orr  
Will Goodison-Orr  
Kelly Davies  
Christina Bristol  
Jill Eden  
Myrna Bennett  
Karen Malone  
Eulalee Hamilton  
Millicent Brathwaite  
Stefania Cohen  
Monique Balsamo  
Lou Balsamo

Vanessa Alleyne  
Ana Marie Forsythe  
Nancy Donaldson  
Mark Dillon  
Susan Ludwigson  
Don Moore  
Ximena Bravo  
Rachael Gareau  
Eileen Kelly-McGeever  
Sarah Stransky  
Nancy Alberga  
Kathy DeWalt  
Lynne Graham  
Vicki Fantozzi  
Catherine Murray  
Pat Sullivan-Perry  
Stu Perry  
Emilie Vogel  
Stephanie Borsi  
Martha Thalheimer  
Maura Daly  
Mary Anne Caton  
Gordon Frey  
Lisa Williams  
Shahri Griffin  
Leigh Mosquera  
Lovey Abner  
Pauline Petrus  
Karen Thompson  
Joy Winnik  
Sue Villarosa

## SPIRITUAL ENRICHMENT: MEN'S GROUP

Lou Balsamo and Ian Williams

### Our Mission Statement:

We are a group of passionate Episcopal Men with a purpose,

We strive to actively engage with our Church, community and each other in a fun focused, camaraderie driven, Christ centered environment where we can be ourselves, while participating in fellowship activities and community ministries.

The Men's Group met four times for the year, all our meetings are planned around a breakfast setting with bacon being the pulling force, which is always scheduled for the second Saturday of each month at 8am at the Rectory or Assembly Hall.

Our first meeting, January 12, 2013, was attended by 12 men including The Rev John Mennell. We brainstormed about the purpose of the group and what we wanted to accomplish this coming year. Ideas of things to do as a group:

- Write a mission statement
- Wiffle Ball Contest
- Sponsor a outing to baseball game
- Sponsor a day of cleaning at St Luke's
- Meet once a month (Sat at 8:00 am)—2nd Saturday of each month.
- Men's retreat in the fall at Holy Cross
- Community service
- Provide a safe place for men to share their feelings/experiences
- Be a mentor to the youth men in the congregation

### Accomplishments for 2012 – 2013:

- Met four times this year
- Wrote the mission statement
- Organized the day of cleaning (spruce up day) on March 23, 2013

The St. Luke's men are continuing the process of defining our mission in the broader community of St Luke's. We are struggling with making the breakfast meeting consistent considering everyone's busy schedule, we are listening as well as being flexible to what all of the Men want this organization to be.

## SPIRITUAL ENRICHMENT: OPPORTUNITIES

Walter Booker, Anne Mockridge, Joanie Collyer, Jinni Rock-Bailey

The name of our ministry is Spiritual Enrichment, led by Walter Booker, Jinni Rock-Bailey, Anne Mockridge, Joanie Collyer. We exist because, in Ephesians 4:12, the Bible calls us to offer support "*for the work of ministry, for the edifying of the body of Christ.*" We aim to joyfully seek and serve Christ when we bring people together in settings where they may explore spiritual issues, ask questions, learn about our faith, and encourage one another. We've been in existence since March 2012, when we set out to respond to needs expressed in the 2011 parish survey.

We began by offering courses in Bible study. In the fall, "The Lord's Prayer" led by Don Moore & Ron Hoglund. In January, "Your Bible: the Study Begins," one class led by Bert Jones & Robert Weber, the other by Molly Williams & Walter Booker. Our current work in progress is "The Beatitudes" about which you'll hear more later. In addition to these six-week courses, we hosted a speaker program on April 26 when author Rick Hamlin discussed his book "Ten Prayers You Can't Live Without," with a reception hosted by Kevin Murphy and Susan Singer. On May 5, Kevin and Susan organized an historic walk to neighborhood churches led by Kevin, Susan Nowicki and Gordon Frey.



Rev. John Mennell's Tuesday noon Lectionary sessions continue each week. Other programs have included the Education for Ministry course being taught by Dall Forsythe; Rev Tom Laws' Bible study at nine on Sunday mornings; the Wednesday evening reflective Bible study, plus the Epistles and other Sunday studies both led by Rev. Diana Wilcox. New Sunday Forums have included talks on spiritual and sacred music by Charles Hunter and "Signs of the Times" by Rev John Mennell. Our thanks goes to Christina Bristol for gathering an enthusiastic group in her home to affirm spiritual gifts.

Over the summer, we'd like to offer a family movie & pizza night. In the fall: studies on Christianity and Islam. For those who want to go deeper into their faith: groups that encourage participants to explore the "how to" of spiritual topics like prayer and forgiveness in more experiential ways.

## **SPIRITUAL ENRICHMENT: PARISH LIFE**

Sue Villarosa and Stephanie Borsi

Parish Life has had a busy year! We have hosted several events, including - Soup & Breads following Lessons & Carols, the Shrove Tuesday Pancake Supper, "Bread & Bubbly" after the Easter Vigil, the Reception for Diana Wilcox's Ordination and, of course, the Big Din!

The Big Din is always our most challenging event. As Sue often says - it takes a "cast of thousands" to pull it together. So what happened in 2012? A HURRICANE! NO POWER FOR DAYS! Costco had no power. The supermarkets had no power.

Parishioners had no power. It seems that the only place that did have power was St. Luke's.

And yet, with all this powerlessness - we pulled it off! All of us! We did a lot of creative shopping and cooking and we did it - YOU did it! So many of you came through with ideas of how to work around buying and cooking a tremendous meal for 200+ people when so many of our usual sources of food had no refrigeration.

Sue and I periodically talk about whether or not we should form an actual committee that meets on a regular basis. But we never seem to get around to it. Whatever we're doing seems to work just fine, because whenever we ask for help - help arrives in abundance. Our annual events are wonderful and fun - but they would be impossible to pull off without all of your donations and, more importantly, your help. And for that we are extremely grateful! So - Thank You!

## **SPIRITUAL ENRICHMENT: WOMEN'S GROUP**

The Rev. Diana Wilcox

*"I do not call you servants any longer, because the servant does not know what the master is doing; but I have called you friends, because I have made known to you everything that I have heard from God"* - John 15:15

The Women's Group is a place of spiritual story telling, and we have completed our first full year.

There was a fall retreat, and recently a Women's Spirit Weekend Gallery & Creative Cafe - a display of the creativity of women in art, music, and poetry. Another retreat is planned for this fall at Holy Cross Monastery.

The Women's Group meets from September - May on the second Friday evening of every month from 7:00 p.m. - 9:00 p.m. in the Davis Room. All women are welcome, and childcare can be provided with advanced notice. Meetings are opportunities for us to talk about what is going on in our lives, and the intersection of that with our faith, in a safe and sacred space. For more information, see the Rev. Diana Wilcox, who facilitates the discussions.

## **MUSIC: MUSIC COMMITTEE REPORT**

Ken Dalton - Chairperson

Psalm 33 tells us to "*Sing to Him a new song, play skillfully and shout for joy.*" The newly formed Music Committee endeavors to fulfill this mandate by enhancing the worship experience of the parish, and by providing others the opportunity to experience the joy of hearing beautiful music in this glorious setting. The Committee's current members; Stephanie Borsi, Sonja Cole, Tom Cochran, Lisa De Lorenzo, Gordon Frey, Ian Williams and Roxie Zeek represent a cross section of the parish, and bring a wide and varied range of experience, interests and perspective to the group.

The Music Committee recently considered, and approved for further action, major work on our magnificent Opus 2 organ. At the time of its installation several years ago, financial considerations prevented the original

plans for the organ from being fully realized. More specifically, the antiphonal division (pipes or speakers at the back of the church) were not installed. This resulted in less than optimal sound, with unbalanced volume between the front and rear of the church.

The Committee reviewed a proposal from the organ builder to complete the organ by adding the much-needed antiphonal division, essentially a twin organ controlled from the main console. Additional speakers will be added, together with necessary amplification and other equipment; updates to the software will also be installed. When this work is completed (by the end of the summer), the instrument will at long last sound the way it was intended. Congregational singing will be fully supported and every person in the church will be able to have the “surround sound” experience enjoyed by the choir.

Looking ahead, St. Luke’s will sponsor and host a choral competition on November 9th, 2013. This event, entitled “These Sacred Voices”, will be a judged sacred choral competition featuring choirs of various sizes and composition, which primarily sing in a language other than English. This competition, which we hope will become an annual event, will provide an opportunity for the parish and the community to hear how others make a joyful noise in praise of God. Several groups have already been contacted and the roster will soon be complete. Save the date!

With tremendous gratitude, the Committee acknowledges and thanks those faithful stewards who made provision in their final wishes for the benefit of the music program at St. Luke’s, especially the much loved Janet May and Jane Hunter. Their generosity has made completion of the organ possible without the need for use of parish operating funds. Likewise, humble thanks are given to the (presently) anonymous donor whose generous donation will enable the choral competition to go on and which will thereafter benefit all of us at St. Luke’s, musicians and music lovers alike.

Ideas and suggestions for the Music Committee are always welcome. Our hope is to expand the music program to include not only the worship service, but also to use our facility for non-church related performances. We are thankful for your support and look forward to your input.

## **MUSIC: SENIOR CHOIR**

Charles Hunter – Director of Music

For many years, the Senior Choir has provided strong leadership at St. Luke’s and in the surrounding community. Our tradition has been one of diversity and eclecticism. We have a responsibility to preserve the best of traditional music as well as well as explore contemporary forms of worship music in all its diversity. They have sung in German, Latin, Welsh, Estonian, Latvian, Russian (Church Slavonic), French, Spanish and Italian. The choir rehearses on Thursdays from 8:00 p.m. to 9:30 p.m., and gathers on Sundays at 9:15 a.m. to prepare for the 10:00 a.m. service. They sing at all 10:00 a.m. services from September through June, and they sang at Lessons and Carols on December 16, and Evensong here on March 4. The Senior Choir sang on Christmas Eve, Ash Wednesday, Maundy Thursday, and at the Easter Vigil. Alison Bolshoi sang at the Christmas Day service, Molly Delorenzo played the cello for us on Christmas Eve, and Lisa DeLorenzo and a flutist played for one of our morning services. We snag a beautiful Evensong service on Sunday afternoon, February 24. Regular members and occasional guest members include: Gina Balestracci, Stephanie Borsi, Christina Bristol, Warren Carr, Janet Chisholm, Sonja Cole, Manny Cruz, Alison Curtin, Charlene and Ken Dalton, Kevin Drew, Doug Eberle, Ned Fawcett, Gordon Frey, Taylor Kurilew, Rachael Gareau, Betsy Ginsburg, Pam Laura, Elsie Lockett, Cornelia Lotito, Tim Mannion, Don Moore, Kelsey O’Connor, Jessica O’Donnell Pete Tamburro, Rob Rose, Sandy Taylor, Sue Villarosa, and Roxie Zeek. We hope that more people will join the choir in coming months: we need singers in all sections of the choir. Interested singers are not asked to audition, nor is vocal or musical training required; however, previous experience singing with a choir is essential.

## MUSIC: JUNIOR CHOIR

Charles Hunter – Director of Music

The Junior Choir has continued to grow throughout the year, as these 2<sup>nd</sup> through 8<sup>th</sup> graders sing a variety of anthems, service music, and hymns, a repertory that includes classical music as well as contemporary songs, and spirituals. The choir sings in church approximately once every 5 weeks, including the family service on Christmas Eve, and their leadership in worship becomes stronger each time they sing. Each Wednesday at 6:00 p.m. in the Assembly Room, they are served a healthy, kid-friendly supper, organized under the capable leadership of Kathy DeWalt. Parents share in the responsibility for supplying these meals, and in supervision of the children before and after services on the days they sing in church. The rehearsal, in the choir room from 6:30 p.m. to 7:15 p.m., the children learn about good singing posture, using their singing voice, holding a hymnal properly, and courtesy to others. Current members include: Alex Alleyne, Mia Balsamo, Lilla Caton, Lauren Christie, Elia and Eron Eden, Neriya Grant, Kirdon and Gerald Jones, Max Koiso, Brandon and Brianna McJunkin, Armaan and Arjun Nischol, Dera and Luka Okuzu, Grady and Sally Short, Lena Harrison, Amber Matthews, Margaret Nowrojee, and Ben Wyatt. This program begins in September and continues into the first week of June.

## CHILDREN: WORSHIP - CELEBRATE! SERVICE

Kathy DeWalt and Joann Short

Our Celebrate! service continues to serve families with young children between 2 and 7 years of age. This service has proven a gateway for inviting new families with young children into our community. This interactive service lasts only 30 minutes and literally has us jumping with joy. Since this time last year we have grown from an average of 16 people at the service to an average of 23 (44% growth). But the real growth is in the voices and rapt attention of the children as they light the candles, set the table, and assist in the Eucharistic celebration. It has proven that it is never too early to make disciples of all nations.

## CHILDREN: GODLY PLAY

Janet Immermann

*Jesus said, "Let the little children come to me, and do not hinder them, for the kingdom of heaven belongs to such as these." - Matthew 19:14.*

In the Godly Play Sunday School class, children from pre-K (four years old) through first grade get a chance to hear, reflect on, and react to Bible stories. Seated in a circle on the floor with the children, the teachers use wooden figures and other props to illustrate the stories as they tell them. Afterwards, the children make a related craft in the art room across the hall.

Teaching our children about Jesus' message of love is one of the most important missions the church can have; it is the hope of the future, not only of the church, but also of the larger world. Even at this early age (perhaps *best* at this age), children understand Jesus' message and have their own insights into the stories in the Bible. We hope that what they learn now will stay with them and inform their decisions as they grow.

Our numbers in the Godly Play age group are steadily growing. Last year, attendance in this age group averaged seven children each Sunday. Our current rolling average is nine, and during the present quarter the average has risen to twelve children. At present we have six teachers who rotate through the teaching schedule. Each Sunday, one person teaches and at least one other is present to help manage the group and assist with the craft.

One of our goals this year was to create an advance schedule of teachers, with each person committed to teaching one or two Sundays in a two-month period. In this way, the responsibility for teaching falls on no single person, the teachers can choose the Sundays they will teach and they can plan their lessons ahead of time. So far, the scheduling seems to be working well. Many, many thanks go out to all our teachers – Lovie Abner, Audrey Anderson, Mikaylah Davies, Sarah Mennell, Ginny Saylor, and Molly Williams – for their commitment and dedication. Also, the assistance of A.J., Julianne, and Zach DeWalt, as well as Jessie Williams, has been greatly appreciated. Kathy DeWalt, of course, has been an endless source of information, ideas, and inspiration, and she cannot be thanked enough.

We can always use more teachers for this group – and will actively be seeking more, since three of our current teachers are high school seniors who will be gone next year. Essential skills needed for teaching Godly Play include a love of children and an enjoyment in sharing the stories of the Bible with them. No previous teaching

experience is necessary. Teachers are not expected to come up with their own lesson plans or activities – everything is provided. Teachers receive a copy of the upcoming lesson by the middle of the week preceding the Sunday they are scheduled to teach. The lesson is usually a short version of a Bible story with very specific instructions on how to use the accompanying physical props to illustrate the story as it is told. Teachers are welcome to come in during the week and do a run-through of the lesson if they want to. The craft is set up in advance so that the teacher just needs to help the children work through it after they have told the story. All the teachers are asked to complete a short online course called ‘Safeguarding God’s Children’ prior to teaching. Anyone interested in teaching or even just acting as an assistant in the classes should please contact Janet Immermann ([j\\_immer@yahoo.com](mailto:j_immer@yahoo.com)) or Kathy DeWalt ([dewalt@slechchurch.org](mailto:dewalt@slechchurch.org)).

## CHILDREN: ROTATIONAL CHURCH

Susan Ludwigson

“Rotational Church” translated means Sunday School for 2/3/4ish graders. We meet each week, either in the computer lab or the loft during the 10:00 a.m. service. Topics we’ve covered this year include the Wedding at Cana, Advent, the Episcopal Service and Liturgy, and the Prophet Elijah. We generally spend three consecutive Sundays on a specific lesson topic. Our lessons include reading, discussing and acting out scripture, dressing up, cooking, arts and crafts and computer games. We even had a “field trip” to the service to witness in action the liturgy that we had learned about (and practiced our respectful listening skills).

This ministry has got the joyfully part of seeking and serving Christ down pat!

I think that the most appropriate scripture to describe this ministry is “Out of the mouth of babes”; I am constantly amazed by our children each Sunday! Truthfully, I think that I get more out of teaching the class and being with the kids than they do.

I want to share one of the most touching moments from our class this year – we were learning about the Episcopal service and particularly the outfits that participants wear. Each child could choose an outfit to dress up in and we re-enacted the processional. One girl picked the Bishop outfit and asked “Is this for girls?” I got teary eyed in my emphatic affirmative answer. Thanks to Kathy DeWalt and all of the others who volunteer for our youth programs!

## YOUTH: VACATION BIBLE SCHOOL

Roxie Zeek

*“Start children off on the way they should go, and even when they are old they will not turn from it.”*  
- Proverbs 22:6

Vacation Bible School is our fun summer program for St. Luke’s kids! For one week in August, students spend their evenings learning new songs and dances, creating crafts, working on projects that go to Toni’s Kitchen, having Bible Time with Mrs. DeWalt, eating dinner, and playing lots of games. We use the great VBS curriculum put together by the Go Fish guys, a Christian rock group, which we adapt for our own needs. Each year has a theme – last year’s was Praise: Where Kids Get Down and Lift God High. This year’s title is Gotta Move: Keeping in Step with the Spirit – a double dutch and dance themed program that looks like a lot of fun!

We are looking for someone to head up VBS this year and are always looking for extra hands to help create this great experience for our kids. If you’re interested in joining in the fun, please email either Roxie at [roxiezeek@gmail.com](mailto:roxiezeek@gmail.com) or Kathy at [kathydewalt276@gmail.com](mailto:kathydewalt276@gmail.com).

## YOUTH: SPIRITUAL ENRICHMENT – RITE 13

Kelly Davies

This class is made up of 6-8th graders that meet every week. We have grown significantly this year. The young adults never cease to amaze the teachers with the questions and input that they have in class. Learning interesting new things about the bible, traditions, holidays, etc., are a few of the things do in class. We also have taken movie clips to relate to bible lessons; it puts a modern spin on it and a way that the young adults can relate to. We have had a growing number of celebrants every year. Our Rite 13 party this year consisted of our celebrants, family members and guests of the celebrants, lots of food, music, and dancing. The young adults enjoyed themselves and their friends were impressed by the “pomp and circumstance” the celebrants were given.

## YOUTH: SPIRITUAL ENRICHMENT – YOUTH GROUP

The Rev. Diana Wilcox

*“Before I formed you in the womb I knew you, and before you were born I consecrated you; I appointed you a prophet to the nations.’ Then I said, ‘Ah, my God! Truly I do not know how to speak, for I am only a youth.’ But God said to me, ‘Do not say, “I am only a youth”; for you shall go to all to whom I send you, and you shall speak whatever I command you. Do not be afraid of them, for I am with you’...” - Jeremiah 1:5-8a*

This was the first year of having a High School Youth Group, and in just a few short weeks, we will be heading out on our first Mission Trip. The Youth Group meets every other Sunday at 5:00 p.m. in the Gathering Space. It is a time for sharing what is happening in their lives, and for exploring their faith.

The Mission Trip will be to Topsail, North Carolina, June 29-July 7, 2013. We will be joining St. Peter's Essex Fells and St. Peter's Morristown on this journey to help those in need. On the way down, we will be visiting the Air & Space Museum in Washington, DC, and staying at St. Paul's Episcopal Church in Richmond, VA (a place recommended by the Rt. Rev. Jack Spong, a parishioner at St. Peter's Morristown). After attending church, we continue the journey to North Carolina, where we will work on housing projects, similar to Habitat for Humanity builds, for the week. The Youth will be blogging each day about their experiences, and information on how to view the blog will be provided before we leave. On the way home, the youth will have a reward for all their hard work - a stop at Six Flags. All of this was made possible by the hard work of the youth and their parents, and the generous donations to the Mission Trip Fund by all of you.

Next year, we will be launching a Middle School Youth Group and expanding both programs, so stay tuned! We also hope to help closer to home in a Sandy Relief effort, as well as plan for the next Mission Trip in the summer for the High School Group. For more information about the Youth Groups, contact the Rev. Diana Wilcox.

## YOUTH: SPIRITUAL ENRICHMENT – CHURCH SCHOOL

Jo Ann Short - Youth Spiritual Enrichment Team Leader

This past year a new group was formed of parishioners, to address how quickly our parish was growing in regard to our youth; babies to college. Each component below was delegated to an adult volunteer to spearhead, nurture and oversee; all under the capable direction of **Kathy DeWalt**, Director of Family Ministries. Our numbers had grown so quickly that our programming structure had to catch up. We have been busy since last Spring.

The **Nursery** was completely renovated to provide a more welcoming and age appropriate space for our youngest parishioners under the leadership of volunteers, **Deborah Jorgensen, Leigh Mosquera, and Shari Griffin**. The number of babies under three on our roster has increased by 12 newborns in the last year. The volunteer and paid adult staff serves as consistent, loving caretakers for 3-4 children of our young families each week.

Our **Sunday School** program (from 4 years old to High School) has increased over last year's numbers from serving 38 children to 48 children each Sunday, an increase of 26%. The curriculum follows along with the gospel reading most Sundays, so the entire family, whether in church or Sunday school, are hearing the same lessons. We have also been blessed to have more teachers (Saints) serving on a rotating schedule to prevent burn out and allow them to partake in a Sunday service on a regular basis. We will need to begin new classes in the fall to expand with our growing numbers.

But we are more than just Sunday School, Kids in preschool and grade school enjoy the annual **Easter Egg Hunt** and **Breakfast with Santa** events, which also serve to invite our friends and neighbors from the wider community to share in fellowship with us. **Family Movie Nights on the Lawn** happen each month during the summer.

St. Luke's **Vacation Bible School** serves children from the community, as well as kids from within the parish, that are in pre-K to Fifth grade. From August 12-16 from 6:00 p.m. to 8:00 p.m., the kids gather for a meal, learn a lesson from the Bible through songs, crafts and activities and are in the loving care of volunteer lead, **Roxie Zeek** and other adult and teen volunteers. Last year we explored “PRAISE!” with DJ Pray Z. This year

we find that we “Gotta Move: Keeping in Step with the Spirit” and **Elizabeth Dalton** and Kathy DeWalt will be seeking other volunteer leaders.

The **Junior Choir** was home to up to 25 second to eighth graders this year, with weekly practices and singing during the 10:00 service on a regular monthly schedule under the professional tutelage of Music Director, **Charles Hunter**. The parents of the kids in the choir donated the dinners during the Wednesday practices and volunteer to be available when needed for disciplining or any one on one care the children may need during the Sunday's in which they sing.

**Diocesan Youth Activities** are available to both our Middle School and High School students. These include a middle school retreat, a high school retreat and Christophany and Happening. St. Luke's attendees, to these annual events, are by far the largest congregation in the Newark Diocese. The strong showing of our teens and young adults makes us, not only stand out, but also sends home real leaders amongst the group. Not only do they gain terrific life lessons and organizational skills, but they also get closer to God along the way.

**High School and Middle School** outings and gatherings come up periodically for just St. Luke's under the care of volunteer extraordinaire, **Kelly Davies**; annual pancake breakfast in January, movie nights, Jackel's games, and our newest event --- A Closer Walk.

Last year we offered a new event to St. Luke's teens called A Closer Walk! They camped on the beach in tents and had a great time! They worshiped with song, friendship and food! They enjoyed 3 piers of amusement rides, \$1.00 hot dogs, pizza, tacos, and more, and had nighttime prayer on the beach under the moonlight. Three families attended in 2012 and plan to increase that moving forward (This year the date for the event will be August 1-3).

\* All adults who work/volunteer in this realm are required to take the on line course of *Safeguarding God's Children* to identify and/or prevent child abuse.

## YOUTH: YOUTH AT CHURCH

Stuart Christie, Art Borsi, Roxie Zeek

Youth at Church encompasses the high school aged members of the parish. These dedicated young people are often not seen by most of the parish, as they volunteer during service to work in the nursery and teach in the Sunday school – *and then* meet together during coffee hour to discuss their teaching experiences, the lesson of the day or whatever else they are interested in. We have a dedicated group of kids and average eight high school students in the service or in class each Sunday. This year four of our students celebrated their Confirmation with Bishop Beckwith at the Cathedral.

## OPERATIONS: CAPITOL CAMPAIGN

Thomas Cochran - Chairperson

At the request of the Vestry and Rector John Mennell, Tom Cochran agreed to organize a Capital Campaign to underwrite a number of handicapped access, energy efficiency, deferred maintenance and building upgrade projects. He had recruited great Capital Campaign committee reflective of the parish's extraordinarily diverse population, including:

Mary Anne Caton; Jarius DeWalt; Ellen Meriney; Harry Mayo III; Ann Mockridge; Pat Moulton; Liz Perez; Bruce Stransky, John Raposa; Joanne Short; Katherine Underwood; Roxie Zeek; Tim Mannion; and Will Hobbie.

We have begun interviewing professional consultants to help us design 1) the campaign, 2) work through a capital needs discernment and priority-setting process involving the entire parish family; and 3) run the campaign to successful conclusion.

Although we are in the earliest stages of the campaign's development – what the mavens of fund-raising call the 'quiet period' – the Capital Campaign Fund has already received two very substantial gifts, which are being put to immediate use, per the recommendations of the Buildings and Grounds Committee and with the approval of the Vestry:

- 1) From the Music Fund established with a bequest from our fellow parishioner Janet May which is being used to complete the organ project with the installation of an antiphonal division in west end of the nave; and
- 2) From Lisa Williams which is being used for two purposes:
  - a. to spruce up the Assembly Hall and attract more individuals, groups to use it for such purposes as performances, catered events, art exhibits, etc., helping us to meet our outreach and balanced operating budget goals; and
  - b. to repair the roof over the women's rest room next to the Second Time Around Shop so that rest room can be upgraded from it's current indoor outhouse status to normal indoor restroom condition.

## OPERATIONS: PERSONNEL COMMITTEE

Deb Van Exel

*The Lord God took the man and put him in the Garden of Eden to work it and take care of it. - Genesis 2:15*

The Personnel Committee is mandated by the By Laws of St. Luke's and is charged with defining job responsibilities, and making hiring recommendations to the Vestry. The Committee also oversees the performance review process and works on other human resources related tasks, such as the development of handbook for employees.

Thanks to participation and input from Committee members Anne Mockridge, Pat Moulton, Jinni Rock-Bailey, Ellen Woods, the Wardens, Martha Thalheimer and John Wyatt, and our Rector, John Mennell, the Committee was able to move forward in addressing the challenge that parish growth has posed to effective communication. In keeping with the vision shared by the Rector at the 2012 Annual Meeting and with Vestry approval, the Facilities Manager and Director of Communications positions were established and we were able to welcome Jay Richardson as Facilities Manager in January, 2013, and Tara Fardellone as Director of Communications in March, 2013. With these positions, we now have expertise and concentrated focus in two very important areas of parish administration. The Committee will continue to work to ensure mandated tasks and other projects support our staff and help them to assist us in our quest to joyfully seek and serve Christ.

## OPERATIONS: PLANNED GIVING

Harry Mayo

Over the past six or seven years, St. Luke's has managed a sustained growth rate that exceeds the great majority of churches nationwide, no matter the denomination. God has seen fit to nurture the diverse nature of our church, and to support our growth from a smaller church operating in the red to one approaching fiscal parity, with an active and growing youth program, and many more members at various ages joining the work of the church in many different capacities. The challenge for us now is to help sustain our future through more than just annual giving and the occasional capital campaign. The purpose of a Planned Giving program is to

provide individual parishioners and friends of the church with a means to help assure the future ministry of the church through planned gifts, whether through outright donations, bequests, charitable gift annuities, charitable remainder trusts, pooled income funds, life insurance, real estate, securities or other means.

We have begun work on structuring a Planned Giving program for St. Luke's. Over the coming months, we will be working with the Episcopal Church Foundation and other planned giving experts to develop a program and printed materials to describe our planned giving efforts to interested parties, and to explain how one can best contribute current or future funds to the church on a confidential basis that makes most sense to an individual's particular situation. As the basic planned giving structure is put in place and materials begin to be developed, we will also be adding committee members to help spread the workload and complete the many additional tasks that will be required to get the program fully up and running. We will also be establishing a means for interested parties to obtain confidential information on setting up a planned gift to the benefit of St. Luke's.

## **OPERATIONS: SPECIAL EVENTS MINISTRY**

Monique Balsamo

The Special Events ministry is dedicated to finding new ways to come together and celebrate, meet new friends and have fun while also raising funds for St. Luke's!!

In Corinthians it is written, *"Every man according as he purposeth in his heart, [so let him give]; not grudgingly, or of necessity: for God loveth a cheerful giver."* and so it's easy to give through special events.

Through social events and gatherings to fundraise, we help get St. Luke's to our five year income and budget goal as well as working towards our great commission: "Go therefore and make disciples of all nations" – branching out into the neighborhoods and bringing the word of God and an invitation to our parish to new "friends".

Since "Many hands make light work" there is no "leader" in our special events committee, rather a wonderful collection of helping hands! It is thanks to this great team – Jo Ann Short, Timothy Mannion, Melissa Williams, Nancy Alberga, Susan Stransky, Brenda Stone, Karen Carter, Christina Bristol, Jinni Rock-Bailey, Stefania & Laryssa Cohen, Diane Barreiros, Harry Mayo, Roxie Zeek and the amazing St. Luke's youth (Nick, John, Hannah & Jesse Williams, Sarah & Grace Mennell and Taylor Bolshoi - just to name a few!)

Current fundraisers include cookie dough, movie tickets, candles & gifts, and flower bulb sales (now underway); Arts & Crafts Fair, Summer T-Shirt Sale & our Jazz, Jeans n' More Fall fundraiser!

To join one of the great 2013 fundraisers, share an idea, donate items to the upcoming silent auction or arts & crafts fair please contact Mo Balsamo at [moniquebalsamo@yahoo.com](mailto:moniquebalsamo@yahoo.com).



## OPERATIONS: STEWARDSHIP REPORT

Jim Short

Stewardship is what we do with all we have, all the time. We are called by God to be stewards all the time, and we have to focus on our needs to give. Stewardship is not something we do for a short period each year, nor is it about the church's need to receive. We are missing the point if we only think about stewardship while trying to balance the budget in November and are placing great pressure on those involved in the process. Stewardship is about our own needs to give back to God and to do God's work here in this life.

We at St. Luke's have great examples of our active ongoing Stewardship. A sampling of these include providing scholarships to assist our children going on Diocesan retreats; providing robes for our growing numbers in the junior choir; providing over 10,000 nutritious meals through Toni's Kitchen; assisting some of our guests to find affordable senior housing so as to not become homeless; assisting others to find employment to provide a stable home for themselves and family; putting on the parish wide Big Din and summer picnics; installing new heating, cooling and fire alarm systems throughout our church property; and adding to our clergy and staff to increase our ongoing Stewardship efforts.

As members of the Stewardship Team, we are tasked with ensuring that we have the resources to be good stewards. I would like to thank those who participated on the team including Nigel John Baptiste, Steph Borsi, Wendell Bristol, Tom Cochran, Okey Okuzu, Martha Thalheimer, Penny Vance, and Lisa Williams.

### 2013 Campaign

	2013	2012	2011	2010	2009
Total Pledges	138	135	126	114	125
Total Dollars	\$294,515	\$310,901	\$290,822	\$262,756	\$249,675
Average Pledge	\$2,134	\$2,303	\$2,308	\$2,305	\$1,997
New Pledges	28				

As the numbers show, we exceeded the number of pledges received in previous years and have 27 new pledging units (individuals or families) for this year. These are great steps along our way as our parish grows in numbers and the work that we do in our community and beyond grows. One troubling aspect to our efforts is that there are 24 pledges from members still in the parish that we received last year that have not made a pledge this year. Every pledge is a stake in the welfare and good works of St. Luke's.

We are all stewards here to do God's work and everyone in the parish is a vital part of our Stewardship efforts.

Thanks to those who have made a commitment to St. Luke's

The following families have made a 2013 pledge commitment to God through St. Luke's for 2013. These 138 out of 315 families have made a commitment to support all of the work that we do in this place to joyfully seek and serve God. If you have not had the chance to fill out a pledge card, there is still time. Your commitment will deepen your connection to what you seek. Join the team!

Lovie Abner  
Isaac & Onome Adejemilua  
Mike & Nancy Alberga  
Yvonne Alexander  
Ellen Alexander  
Vanessa Alleyne  
Jason & Susan Andersen  
Audrey Anderson  
Louis & Monique Balsamo  
Meg Banitch  
Twyla Banitch  
Tim & Mary Barrett  
Scott & Elizabeth Bartlett  
Myrna Bennett  
Henry Birdsall & Carol  
McCarthy  
Sam & Alison Bolshoi  
Walter Booker  
Dean & Penny Boorman  
Art & Stephanie Borsi  
Caty Borsi  
Christina & Wendell Bristol  
Marjorie Brown  
Diane Bundy  
Betsy Burgess  
Joe Calabrese & Karen  
Thompson  
Jana & Raymond Cardoza  
Jim & Sandy Carter  
Aney Chandy  
Sara Chandy  
Janet Chisholm  
Stuart Christie & Cathie Mazza  
Tom & Rachel Cochran  
Stefania Cohen  
Sonja Cole  
Joanie Collyer  
Ken & Charlene Dalton  
Kelly & Greg Davies  
Lisa DeLorenzo  
Mark Dillon & Nancy Donaldson  
Doug & Wyndie Eberle  
Wilford & Jill Eden  
Vernon & Joy Endo  
Vicki & Tom Fallace  
Orobola & Funmi Fasehun  
Dall & Ana Marie Forsythe  
Gordon Frey  
Marcelle Gaia

Elisabeth & David Ginsburg  
Lynne Graham  
Shahri Griffin  
Cynthia Hadley Bailey &  
Warren Bailey  
Eulalee Hamilton  
Lysette Hamilton  
Karl Hartzell & Rebecca  
Williams  
Bill & Joan Hearst  
Melanie & Emil Hemsey  
William Hill  
Will Hobbie & Penny Vance  
Ron Hoglund  
Charles Hunter  
Linda Hyndman-Lewis &  
George Lewis  
Janet Immermann & Elchi  
Nowrojee  
Lewis S. Jackson  
T'Keyah Jacobs  
Sylvia & Walter Jones  
Keith & Kitty Kaweck  
Kathleen Kellaigh  
Elizabeth Kenny  
Sally Kress  
Tom Laws & Oneida Mendez  
Elsie Lockett  
Margaret Lockwood  
Karen Lombardo  
Elena Lopez  
Susan Ludwigson & John Wyatt  
Bill & Judy Lutz  
Barbara Malcolm  
Betty Malone  
Karen Malone  
Tim Mannion  
John & Kim Marcantonio  
Henri & Ann Marguet  
Elaine Matthews  
Harry & Joan Mayo  
Mike & Eileen McGeever  
Bob & Toni Mennell  
John Mennell  
Ellen Meriney  
Oscar & Anne Mockridge  
Donald Moore  
John Morey  
Leigh Mosquera

Harry & Rita Moss  
Pat Moulton & Jim Snodgrass  
Tara Murphy  
Catherine Murray  
Kris & Michael O'Connor  
Michael & Jessica O'Donnell  
Okey & Enuma Okuzu  
Michael Peinovich & Billie  
Gleissner  
Liz Perez  
Stu & Patt Perry  
Pauline Petrus  
Simone Plass  
Suzanne Poor  
John Raposa & Jon Coates  
Angie Rispoli  
Jinni Rock-Bailey  
Luis Sanchez  
Rich & Barbara Schnell  
Caroline Schumann  
Velma Seabrooks  
Kathy & John Shanahan  
Jim & Jo Ann Short  
Susan Singer  
Victor & Leslie Slezak  
Norma Small  
Jack & Liz Smith  
Robert Smith & Maura Daly  
George Stewart  
Reese & Brenda Stone  
Elberta Stone  
Valerie Stone & Kathryn Hall  
Bruce & Sarah Stransky  
Martha Thalheimer  
April Tully  
Sharon Turner  
Deborah Van Exel  
Francoise Varkala  
Sue Villarosa  
Dianne & konstantin Walmsley  
Robert Weber  
Diana Wilcox  
Ian & Molly Williams  
Lisa Williams  
Kim Woodard  
Dave & Ellen Woods  
Olga Yearwood  
Roxie Zeek

## OPERATIONS: TREASURER'S REPORT

Penny Vance

The Finance Committee had two goals of note this year. The first was to submit a balanced budget; one designed to manage expenses within the confines of income raised this year. The second was to create some growth goals that were somewhat more ambitious than in years past. We are a growing church community. Finding new ways to raise money will help us remain a healthy, vibrant family, even while our needs increase.

Creating a balanced budget is challenging, but nothing like the challenge of meeting the targets we set in place at the beginning of the year: **100% Pledge Participation** to help us generate \$375,000 in donated funds this year. That's a big goal, but one we think is attainable if everyone contributes something. The second growth goal was to **find new ways to use our church spaces that might help generate income AND awareness**. We have a wonderful, vibrant church space. Why not make sure everyone in Montclair comes to see it for one reason or another? And finally, a budget and goals are only worthwhile if we hold each other accountable, and work together to achieve our targets. We listened at the Budget Summit held in November and heard all the Committee chairs saying the same thing: **we need to be better connected to each other**. We recommended the formation of Saint Luke's Operating Committee, which now meets every month to discuss what's going on in the church; we report on how we're doing with our committee goals, and we work to support each other with ideas, energy and humor! It is a delight to begin every month with this remarkable team of dedicated people who are working together to support our church community.

I would like to recognize and thank the people who work tirelessly on the Finance Committee with me: Tom Cochran, Jarius DeWalt, Harry Mayo, Cathie Mazza, Elaine Matthews, Martha Thalheimer, John Wyatt and John Mennell.

## OPERATIONS: VESTRY REPORT

John Wyatt

2013 has been a momentous year for the St. Luke's Vestry. The Vestry has for the first time in a decade adopted a balanced budget (for 2013.) This has been a consuming project that requires ambitious work across many areas: Finance, obviously (led by Penny Vance) and Stewardship (led by Jim Short); but perhaps less obviously, the adoption of a balanced budget has also driven the early stage implementation of a Capital Campaign (led by Tom Cochran), Planned Giving (led by Harry Mayo), the creation of the St. Luke's Operating Committee (led by Martha Thalheimer and John Wyatt), the creation of a Special Events committee led by Monique Balsamo, and probably some other things as well :)

The balanced budget resolution has even been an important factor in our new Cluster Ministry relationship with Holy Trinity of West Orange. To start the year, the determination of the Vestry to **BALANCE OUR BUDGET** led to a very difficult decision to cut our pledge to the Diocese which led to a meeting with the Bishop, [He was not especially pleased.] However, at the same time, the Vestry, after much deliberation, voted to engage in a Cluster Ministry initiative instigated by the Bishop and the broader Diocese, whereby large, growing churches, such as St. Luke's, practice missional outreach to reach outside our walls, in our case, to interact with Holy Trinity, a smaller Episcopal church, just a few miles away, (West Orange). In return for assuming many of the operational responsibilities of a smaller parish, the Vestry was able to offer the Rev. Diana Wilcox employment. Holy Trinity pays a portion of Rev. Diana Wilcox's salary, which is also subsidized in part by the Diocese. Not only was it deemed critical by the Vestry to engage the services of Diana, we are also enriched by increasing interaction with Holy Trinity parishioners who have come to St. Luke's for Bible Study, services and more.

In keeping with the addition of Diana Wilcox, even as the Vestry has adopted a balanced budget, the Vestry has also made two other crucial personnel decisions, in the belief that we must invest in talent to serve our parishioners and sustain our growth. This has led to the creation of two other part time jobs (with fulltime responsibilities): our new Communications Director, Tara Fardellone; and our Facilities Manager, Jay Richardson, who is working with the Vestry to help St. Luke's utilize it's buildings efficiently and productively with an eye to both cutting costs and increasing income. The Vestry has also been very keen to maintain or increase our many commitments: to music, outreach, youth, enrichment and the like.

As we at St Luke's have a large property with old buildings, maintaining them and investing in them always requires a delicate balancing act of being at once careful stewards of our financial resources while also being stewards of our Buildings and Grounds. The most significant of these issues in 2013 have been oil tank

remediation and a new gutter system. As part of our transition from oil -fired heat to modern HVAC systems St. Luke's removed two very old oil tanks. One was removed without incident however the second was found to have holes. This is sensitive and expensive work that has taken a lot of planning led by Mike Peinovich. Also, after evaluation by Will Hobbie of Buildings and Grounds, the vestry approved 16k for fixing our gutter system, which has led to the structural disrepair-- most noticeably in the women' s bathroom and also 10k for improving the assembly hall. Such is the major work that has kept your St. Luke's Vestry very busy in 2013!

## COMMISSIONING OF WARDENS, VESTRY MEMBERS AND DELEGATES

<i>Warden</i>	I present to you these persons to be admitted to the ministry of Warden or Member of the Vestry in this congregation.
<i>Officiant</i>	Are these persons you are to present prepared by a commitment to Christ as Lord, by regular attendance at worship, and by the knowledge of their duties, to exercise their ministry to the honor of God, and the well being of his Church?
<i>Warden</i>	I believe they are.
<i>Officiant</i>	You have been called to a ministry in this congregation. Will you, as long as you are engaged in this work, perform it with diligence?
<i>Electee</i>	I will.
<i>Officiant</i>	Will you faithfully and reverently execute the duties of your ministry to the honor of God, and the benefit of the members of this congregation?
<i>Electee</i>	I will.

## WARDENS AND MEMBERS OF THE VESTRY

<i>Officiant</i>	Let us pray. <i>Silence</i>
<i>All</i>	<b>O Eternal God, the foundation of all wisdom and the source of all courage: Enlighten with your grace the Wardens and Vestry of this congregation, and so rule their minds, and guide their counsels, that in all things they may seek your glory and promote the mission of your Church; through Jesus Christ our Lord. Amen.</b>
<i>Officiant</i>	In the Name of God and of this congregation. I commission you as Wardens and Members of the Vestry in this Parish.

## DELEGATES TO DIOCESAN CONVENTION

<i>Sponsor</i>	I present to you these persons, duly elected as Delegates and Alternate Delegates to the 2014 Diocesan Convention, to be commissioned for their ministry.
<i>Officiant</i>	Let us pray. <i>Silence</i>
<i>All</i>	<b>Eternal Lord God, who by the Holy Spirit presided at the council of the Apostles to guide them in all knowledge and truth: Be present with our Delegates to Diocesan Convention. In the passions of debate give them a quiet spirit, in the complexities of the issues give them clear minds, and in the moments of decision give them courageous hearts. Guide them in all things to seek only your glory and the good of your Church; through Jesus Christ our Lord. Amen.</b>
<i>Officiant</i>	In the Name of God and of this congregation, I commission you as Delegates and Alternate Delegates to the 2014 Diocesan Convention.

# HYMN 686

Guide me, O Thou Great Jehovah

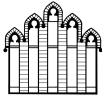
1 Guide me, O thou great Je - ho - vah, pil - grim through this  
 2 O - pen now the crys - tal foun-tain, whence the heal - ing  
 3 When I tread the verge of Jor - dan, bid my anx - ious

bar - ren land; I am weak, but thou art might - y;  
 stream doth flow; let the fire and cloud - y pil - lar  
 fears sub - side; death of death, and hell's de - struc - tion,

hold me with thy power - ful hand; bread of hea - ven,  
 lead me all my jour - ney through; strong de - liv - erer,  
 land me safe on Ca - naan's side; songs of prais - es,

bread of hea - ven, feed me now and ev - er -  
 strong de - liv - erer, be thou still my strength and  
 songs of prais - es, I will ev - er give to

more, feed me now and ev - er - more.  
 shield, be thou still my strength and shield.  
 thee, I will ev - er give to thee.



"Here I am Lord, send me." - Isaiah 6:8

# ST. LUKE'S EPISCOPAL CHURCH

## 2013 Ministries

Ministry	Brief Description	Leader/Contact
<b>Worship</b>	<b>Worship Committee</b>	Kathleen Kelleigh
	<b>Worship Assistant</b>	Diana Wilcox
	<b>Acolyte</b>	Will Hobbie
	<b>Lay Reader</b>	Kathleen Kelleigh
	<b>Eucharistic Ministers</b>	Diana Wilcox
	<b>Eucharistic Visitors</b>	Diana Wilcox
	<b>Usher/Greeter</b>	Wendell Bristol
	<b>Healing Team</b>	Karen Thompson
	<b>Altar Guild</b>	Martha Thalheimer
<b>Outreach</b>	<b>Flower Guild</b>	Gordon Frey/Tim Mannion
	<b>Toni's Kitchen</b>	Anne Mernin
	<b>Second Time Around Shop</b>	Ellen Meriney
	<b>Outreach Committee -AIM</b>	Catherine Murray
	<b>Relay for Life - Montclair</b>	Stephanie Borsi
	<b>CROP Walk</b>	Mike Alberga
	<b>Christ Child Project</b>	Jill Eden/Lilli Delmar
	<b>Habitat for Humanity</b>	Jim Snodgrass
	<b>HOMECorp Montclair</b>	Jim Snodgrass
	<b>Seaman's Church Institute</b>	Megan Sanders
	<b>Job Seekers</b>	John Mennell
	<b>Al-Anon</b>	John Mennell
	<b>AA</b>	John Mennell
<b>Spiritual Enrichment</b>	<b>Memorial Committee</b>	Billie Glessner
	<b>Spiritual Enrichment Team</b>	Book/Mock/Rock & Collyer
	<b>Education for Ministry</b>	Dall Forsythe
	<b>Lectionary Bible Study</b>	John Mennell
	<b>Books Course</b>	Tom Laws
	<b>Reflective Bible Study</b>	Diana Wilcox
	<b>Kerygma Courses</b>	Book/Mock/Rock & Collyer
	<b>Bible Challenge</b>	John Mennell
	<b>Adult Forums/Education</b>	John Mennell
	<b>Special Enrichment Events</b>	Book/Mock/Rock & Collyer
	<b>Evangelism (New)</b>	Monique Balsamo
	<b>Parish Life</b>	Steph Borsi/Sue Villarsosa
	<b>Parish Growth &amp; Development</b>	Karen Malone
	<b>Coffee Hour Teams</b>	Sue Villarsosa
	<b>LGBT Group (New)</b>	TBD - Diana Wilcox
<b>Youth</b>	<b>Women's Group</b>	Diana Wilcox
	<b>Men's Group</b>	Lou Balsamo/Ian Williams
	<b>Post-College/Pre-Children(New)</b>	AJ DeWalt
	<b>Church School Management</b>	JoAnn Short
	<b>Nursery</b>	Shahri Griffin/Leigh Mosquera
	<b>Celebrate!</b>	John Mennell
	<b>Godly Play</b>	Janet Immermann
	<b>Rotational Church School</b>	Susan Ludwigson
	<b>Rite 13</b>	Kelly Davies
	<b>Confirmation</b>	Diana Wilcox
<b>Music</b>	<b>Youth at Church</b>	Diana Wilcox
	<b>Family Events</b>	Kelly Davies
	<b>Vacation Bible School</b>	Roxie Zeek
	<b>Kids in the Kitchen</b>	Lou Balsamo
	<b>Youth Group</b>	Diana Wilcox
<b>Music</b>	<b>Music Committee</b>	Ken Dalton
	<b>Senior Choir</b>	Charles Hunter
	<b>Junior Choir</b>	Charles Hunter
	<b>Schola Cantorum on Hudson</b>	Deborah King
<b>Admin</b>	<b>Early Music Group</b>	Charles Hunter
	<b>Vestry</b>	Martha Thalheimer
	<b>Operating Committee</b>	Martha Thalheimer/John Wyatt
	<b>Communication (New)</b>	TBD - John Mennell
	<b>Buildings &amp; Grounds</b>	Suzanne Poor
	<b>Finance Committee</b>	Penny Vance
	<b>Stewardship Team</b>	Jim Short
	<b>Special Fundraising Events</b>	Monique Balsamo
	<b>Capitol Campaign</b>	Tom Cochran
	<b>Planned Giving</b>	Harry Mayo
	<b>Personnel</b>	Deb Van Exel
	<b>Counters</b>	Stephanie Borsi
	<b>Foundation Committee</b>	Tom Cochran

## MISSION STATEMENT

*St. Luke's is a joyful, Christ-centered community. We accept, encourage, and celebrate a unique mix of people and embrace each other's faith journey. We offer a rich variety of worship experiences, undergirded by strong preaching, liturgy and music. We are committed to growing through caring, education, and service. Our mission is to live the Gospel, looking beyond ourselves, by praying, learning and giving.*

## WARDENS AND VESTRY

### WARDENS

CLASS OF 2011  
Martha Thalheimer

973-748-0412; wardens@slechurch.org

CLASS OF 2012  
John Wyatt

973-748-4482; wardens@slechurch.org

### VESTRY

CLASS OF 2013  
Jinni Rock Bailey  
Tom Cochran  
Mike Peinovich  
Rob Smith

CLASS OF 2014  
Sonja Cole  
Jill Eden  
Elaine Matthews  
Anne Mockridge

CLASS OF 2015  
Walter Booker  
Jim Short  
Penny Vance  
Roxie Zeek

### TREASURER

Penny Vance

## STAFF

### RECTOR

The Rev. John A. Mennell

mennell@slechurch.org

### ASSISTANT TO THE RECTOR

The Rev. Diana Wilcox

Wilcox@slechurch.org

### ASSISTING CLERGY

The Rev. Tom Laws  
The Rev. John A. Marcantonio  
The Rev. Oscar A. Mockridge III  
The Rev. Megan Sanders

### DIRECTOR OF MUSIC

Charles Hunter

hunter@slechurch.org

### DIRECTOR OF OUTREACH

Anne Mernin

mernin@slechurch.org

### DIRECTOR OF SPIRITUAL ENRICHMENT

Kathy DeWalt

dewalt@slechurch.org

### FACILITIES MANAGER

Jay Richardson

Richardson@slechurch.org

### DIRECTOR OF COMMUNICATIONS

Tara Fardellone

fardellone@slechurch.org

### BOOKKEEPER

Arline Amaducci

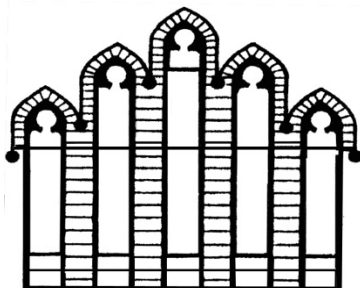
amaducci@slechurch.org

### CHILDCARE

A. J. DeWalt

### SEXTON

Jorge Ordonez



## ST. LUKE'S EPISCOPAL CHURCH

73 SOUTH FULLERTON AVENUE,  
MONTCLAIR, NJ 07042

WWW.SLECHURCH.ORG

973-744-6220