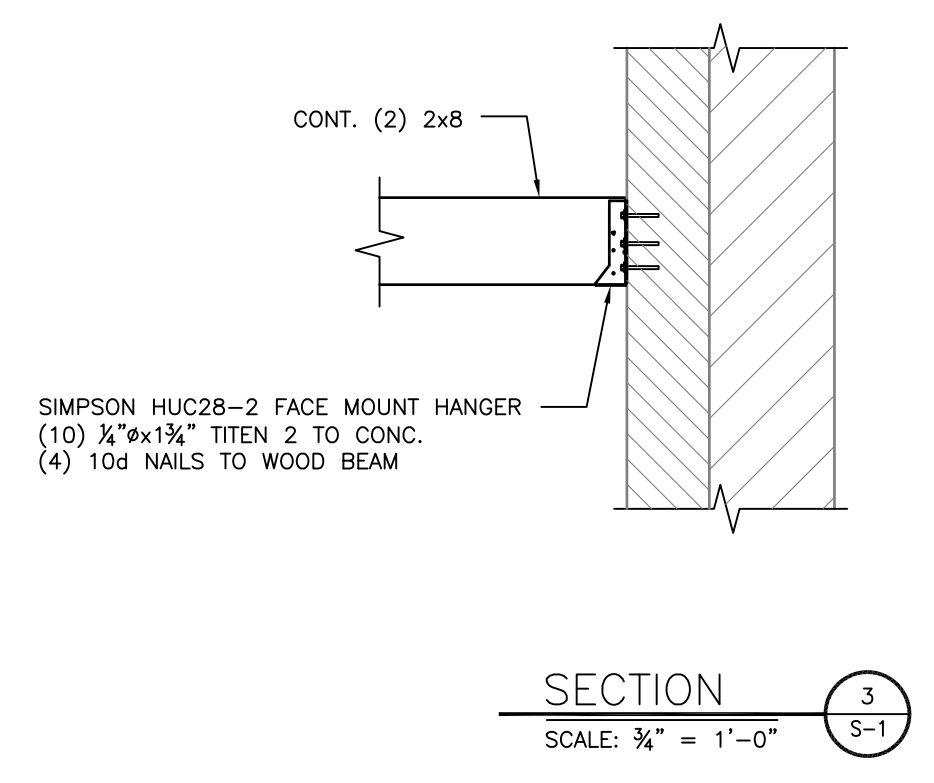


- SEQUENCE OF CONSTRUCTION
1. INSTALL SHORING SYSTEM. PRESSURE SHORING SYSTEM WITH ADEQUATE STRAIN TO PRE-LOAD HSS NEEDLE BEAMS.
 2. NOTIFY CHRISTIE ENGINEERING TO PERFORM INSPECTION OF INSTALLATION PRIOR TO REMOVING BRICK WALL BELOW.
 3. AFTER ACCEPTANCE OF INSTALLATION, PERFORM PARTIAL REMOVAL OF ONE WALL FOR INSTALLATION OF NEW W-BEAM. MAINTAIN FULL LOAD BEARING SUPPORT OF ADJACENT PRECAST WALL. DURING INSTALLATION OF PRECAST BEAM, MAINTAIN FULL LOAD BEARING SUPPORT OF W-BEAM.
 4. AFTER INSTALLATION OF BOTH BEAMS, REMOVE SHORING AND BEGIN REMOVAL OF REMAINING PORTION OF BRICK WALLS BELOW.



NO.	DATE	REVISIONS
	11/01/19	THRIFT SHOP DOOR

IMPROVEMENTS TO
ST. LUKE'S EPISCOPAL CHURCH
73 S. FULLERTON AVENUE
TOWNSHIP OF MONTCLAIR
NEW JERSEY, 07042

JEFFREY A. BRAVSTEN, P.E.
E.L.P.E. NO. 44128

Sionas Architecture, P.C.
ARCHITECTURE + LANDSCAPE ARCHITECTURE + PLANNING
8 Hillside Avenue, Suite 208, Montclair, NJ 07042 (973) 783-2958
www.SionasArchitecture.com

THRIFT SHOP DOOR
OPENING PLAN AND
SECTIONS
PROJECT NO.
17088

SHEET NO.

S-1

CHRISTIE ENGINEERING, P.C.
CONSULTING ENGINEERS
211 SOMERVILLE ROAD
BEDMINSTER, NJ 07921
PHONE: (908) 470-1919 FAX: (908) 470-1949
CE PROJECT #17-086